

Thank you for the opportunity to speak today.

My name is Carri Andersson.

I would like to provide testimony about nature of our waterfront setting by using the persistent physical reference points that remain today. I will show a set of images that illustrate how the historic waterfront might have looked, based on the persistent physical references.

We know with certainty that the Granary has stood for 116 years. It can be a valuable reference point when we are attempting to understand changes to this waterfront over the past 100+ years. We know that the center line grids of many of the streets that run through this city have locations that are at or very near their historic locations.

The centerlines of streets when taken as a grid of multiple points can be used to overlay subsequent map grids, using map scales, with a reasonable degree of confidence. Using enduring landmarks I believe we can infer how this Westside waterfront might have looked.

I am going to show a set of slides that were developed from a model that is based in part on our street grids and the location of the Granary as landmarks, on the 1873 shoreline mapped by surveyor Dan Chaput, contemporary GIS information, and other resources.

Our expert witness, Don Chaput, an experienced surveyor, has indicated that the Sanborn maps he evaluated in this area are accurate to within 5 to 10 feet north-south and within 10 to 20 feet east-west based on his testimony taken on August 31<sup>st</sup>, 2016 and is found on page 33 lines 13-21.

// I'm going to show a set of slides that are produced from a software package called SketchUp. //

The purpose of this model is to provide a reasonable visualization model for the west waterfront in the early 1900's that integrates the information from maps, photos and existing physical markers. It is not a definitive reconstruction of the setting of the West waterfront. It is a most plausible view based on the information we have and it is helpful in understanding the physical layout in the early 1900s. This model was developed integrating three maps and two photographs showing the historic Granary. The three maps used in this exercise are the 1904 Sanborn Map, the 1908 Army Corp of Engineers map, and a current aerial orthophotograph obtained from the Door County Land Information Office. Two photos were used; a photo from the 1904 "Democrat" newspaper, and a photo, estimated at 1911, from the Door County Historical Museum.

// Slides 1-20 //

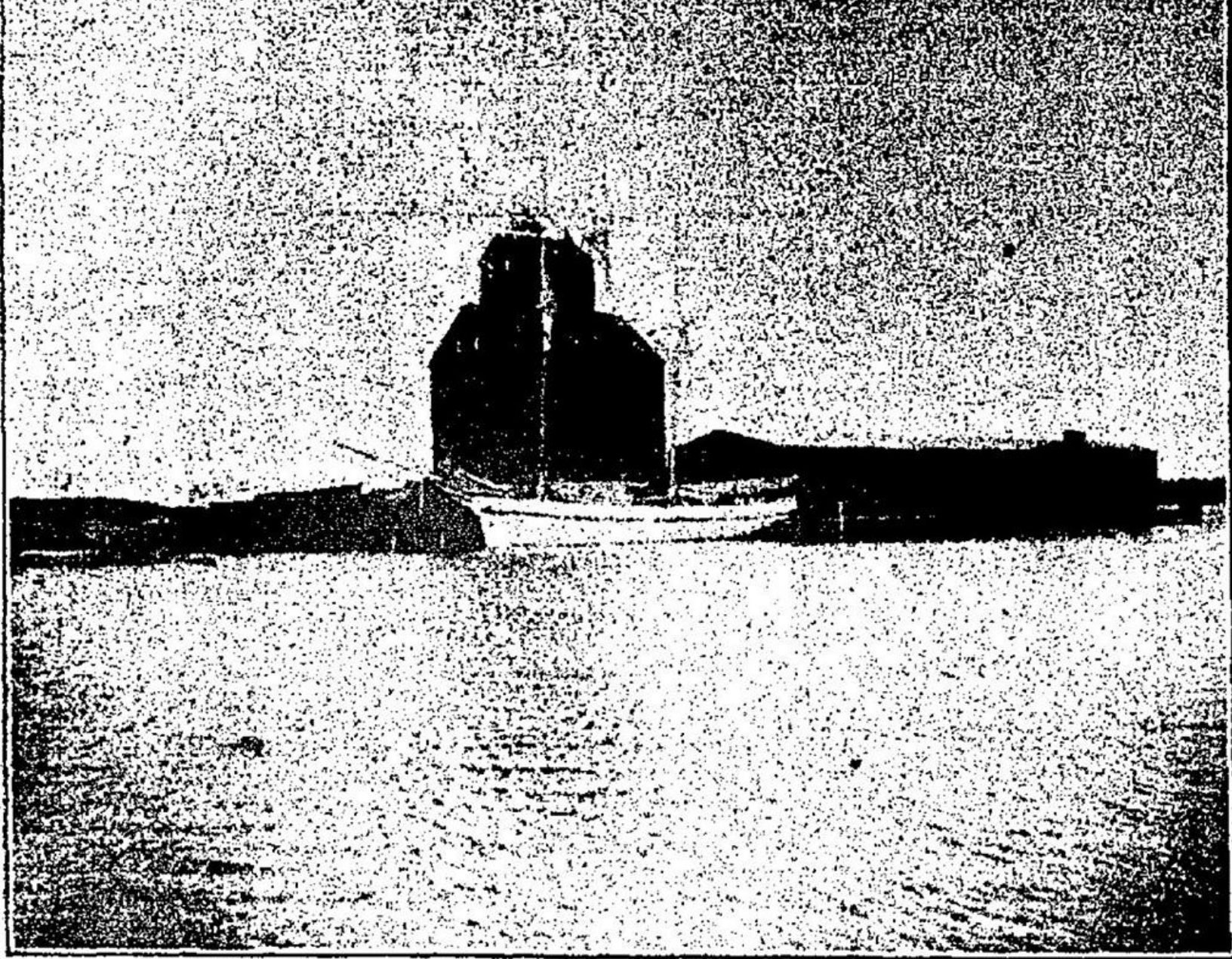
The integration of persistent physical markers of the Historic Granary and Sturgeon Bay street grids combined with photographs and maps permits a reasonable visualization model that show a highly plausible configuration of the west waterfront. It shows that most of Parcel 92 was lakebed in the early 1900s. I think this visualization is helpful. Using it I have drawn the conclusion that most of Parcel 92 was below the Ordinary High Water Mark in the early 1900s.

Thank you.

An integration of maps, photographs and physically persistent reference points on the landscape of West Waterfront of Sturgeon Bay (Sawyer).

Showing a plausible depiction of the early 1900s as it relates to current day streets and parcels.





Picture from  
Door County  
Democrat

22 October 1904

**ELEVATOR AND WAREHOUSES OF TEWELES & BRANDEIS.**



# 1904 Model



1904 Model

1873 water edge added in Blue  
per 1873 Bay View Plat



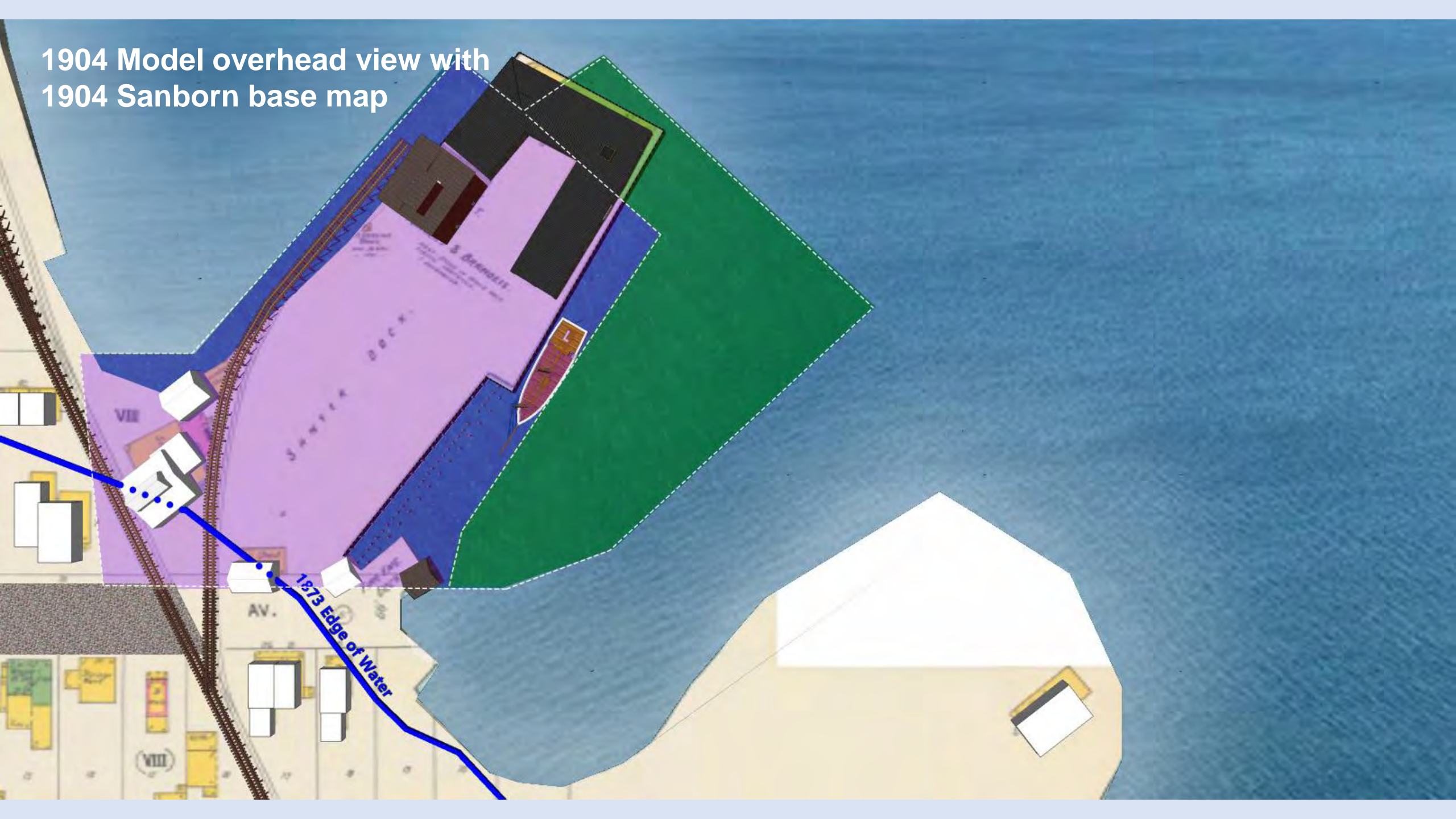


1904 Model  
with present day parcels  
92 violet/blue and 100 green





1904 Model overhead view with  
1904 Sanborn base map





1904 Sanborn map with parcel 92 Red



**KEY**

	FIRE WALL 6 IN. ASBY ROOF.
	METAL CORNICE.
	FIRE WALL 12 IN. ASBY ROOF.
	WOOD CORNICE.
	FIRE WALL 18 IN. ASBY ROOF.
	FRAME PARTITION.
	OPENING WITH IRON DOOR.
	" " "STANDARD" "
	IRON DOOR.
	WINDOWS & IRON SHUTTERS.
	WINDOW - 1ST STORY.
	WINDOWS 1ST & 3RD STORIES.
	" " 2ND & 4TH " "
	STABLE.
	BUILDINGS COLORED YELLOW ARE FRAME.
	" " RED BRICK.
	" " BLUE STONE.
	" " GRAY IRON.
	" " BROWN ADobe.
	" " GREEN SPECIALS.

⑤ ②⑦ INDICATE RELATIVE HEIGHTS.  
 FIRE STATION, AS SHOWN ON KEY MAP.  
 ALTERNATE STREET NUMBERS ARE ACTUAL.  
 CONSECUTIVE STREET NOS ARE ARBITRARY.

MAR. 1904  
**STURGEON BAY**  
 WIS.  
**SAWYER OR BAYVIEW**

View of Seaside Harbor, Wis.



Door  
County  
Historical  
Museum  
Photo

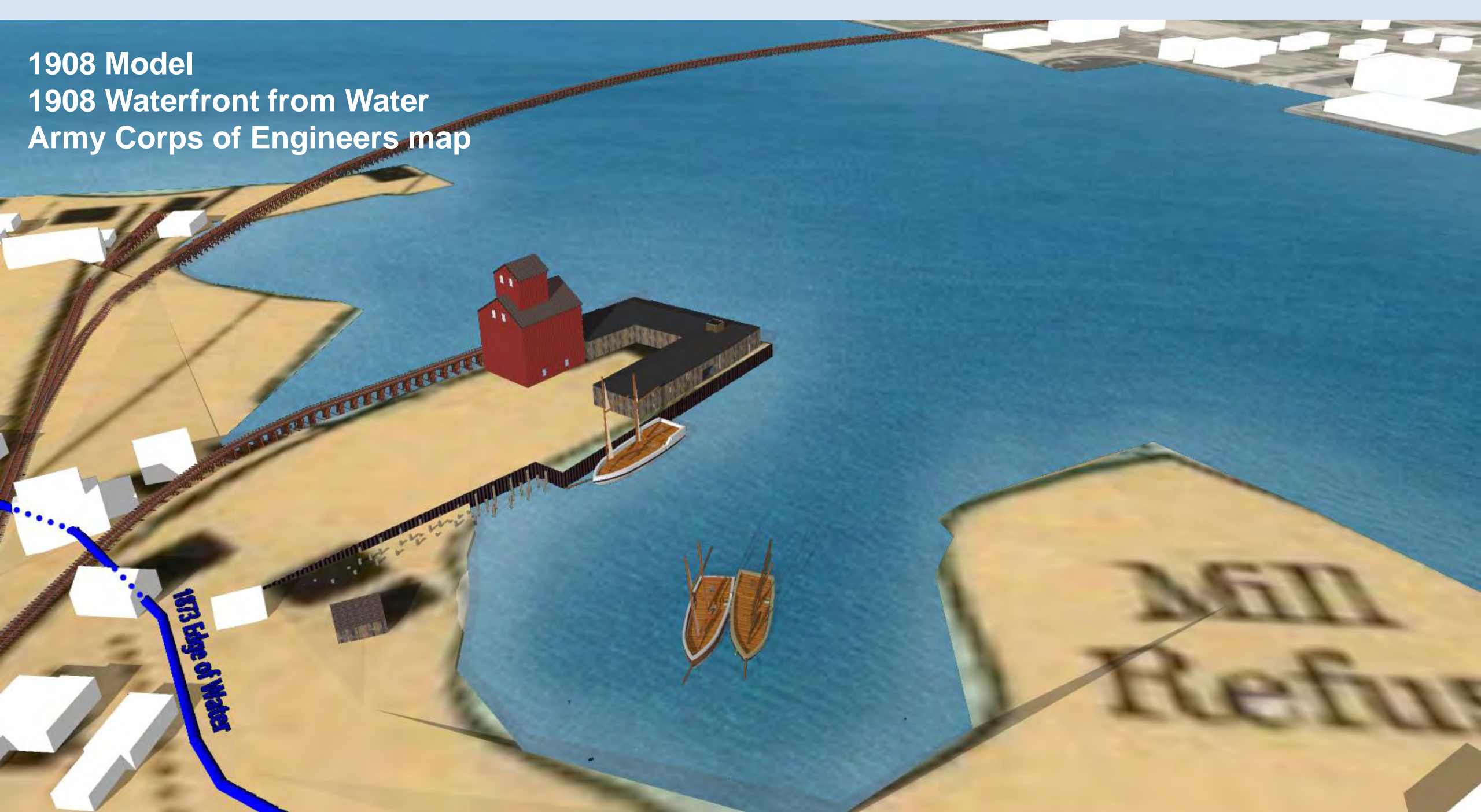
1911



1908  
Model



1908 Model  
1908 Waterfront from Water  
Army Corps of Engineers map





1908 Model  
with present day parcels  
92 violet/blue and 100 green





1908 Model overhead view





1908 Model overhead view with  
present day parcels  
92 violet/blue and 100 green





1908 Army Corp Map



14

13

Teweles & Br

2

13

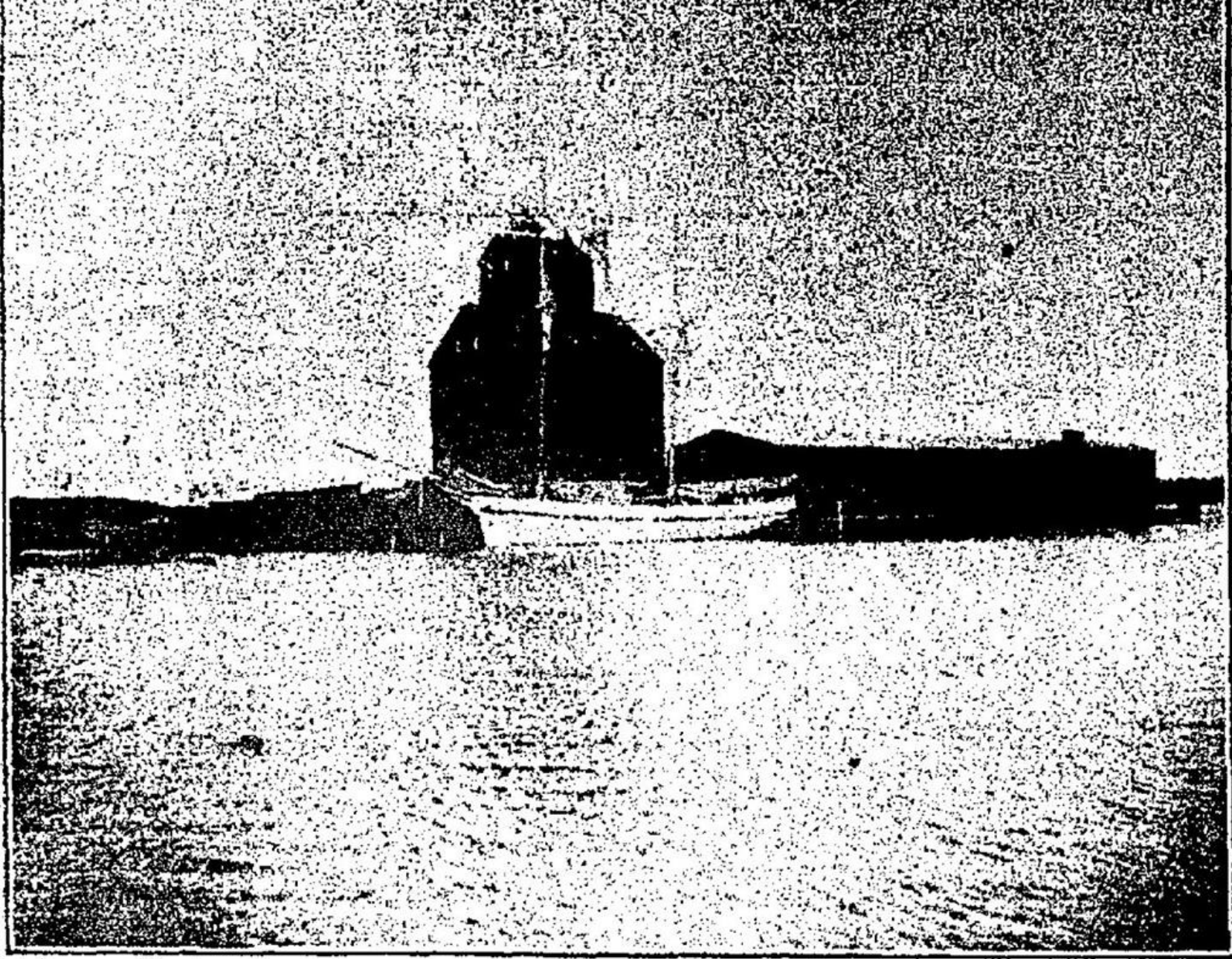
Mill  
Refuse



Parcels 92 & 100 shown with  
current base aerial photo







22 October 1904

**ELEVATOR AND WAREHOUSES OF TEWELES & BRANDEIS.**





1904 Model



18 August 2017



## **References cited:**

1. Door County Democrat October 22<sup>nd</sup> 1904
2. 1904 Sturgeon Bay Sanborn Map
3. 1908 Army Corp of Engineers Sturgeon Bay soundings map (?).
4. 1911 Schroeder Photo from Door County Historical Society
5. Door County Land Information Office

**Model Created by Sara Powers, Minneapolis, MN**