
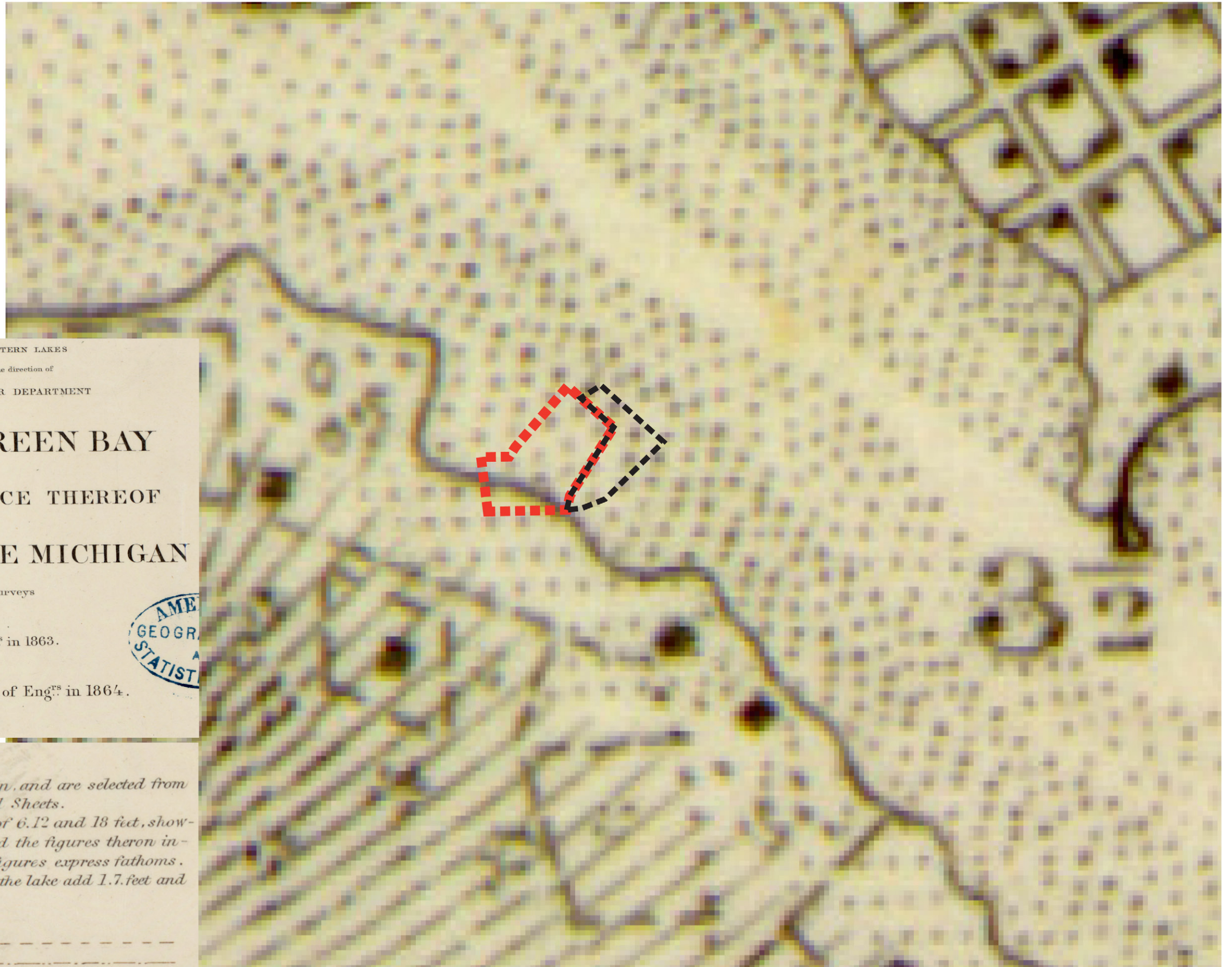


1863

US Army Corps of Engineers

 Parcel 92

 Parcel 100



SURVEY OF THE NORTHERN AND NORTH WESTERN LAKES
 Made in obedience to acts of Congress and under the direction of
 THE BUREAU OF ENGINEERS OF THE WAR DEPARTMENT

SOUTH END OF GREEN BAY

THE


ISLANDS AT THE ENTRANCE THEREOF

AND PART OF

WEST SHORE OF LAKE MICHIGAN

Projected from Trigonometrical Surveys
 executed under the orders of
 Col. J.D. GRAHAM, U.S. Eng^{rs} in 1863.
 and
 Col. W.F. RAYNOLDS, A.D.C. and Maj. of Eng^{rs} in 1864.

Scale 120000.



NOTE.

The characteristic Soundings only are given, and are selected from numerous Soundings recorded on the original Sheets.

The dotted surfaces represent the depths of 6.12 and 18 feet, showing at a glance the limits of navigation and the figures thereon indicate feet, outside the dotted surfaces the figures express fathoms.

To obtain the probable maximum depths of the lake add 1.7 feet and for the minimum depth deduct 2.8 feet.

Sailing lines are represented thus - - - - -

Range lines - - - - -

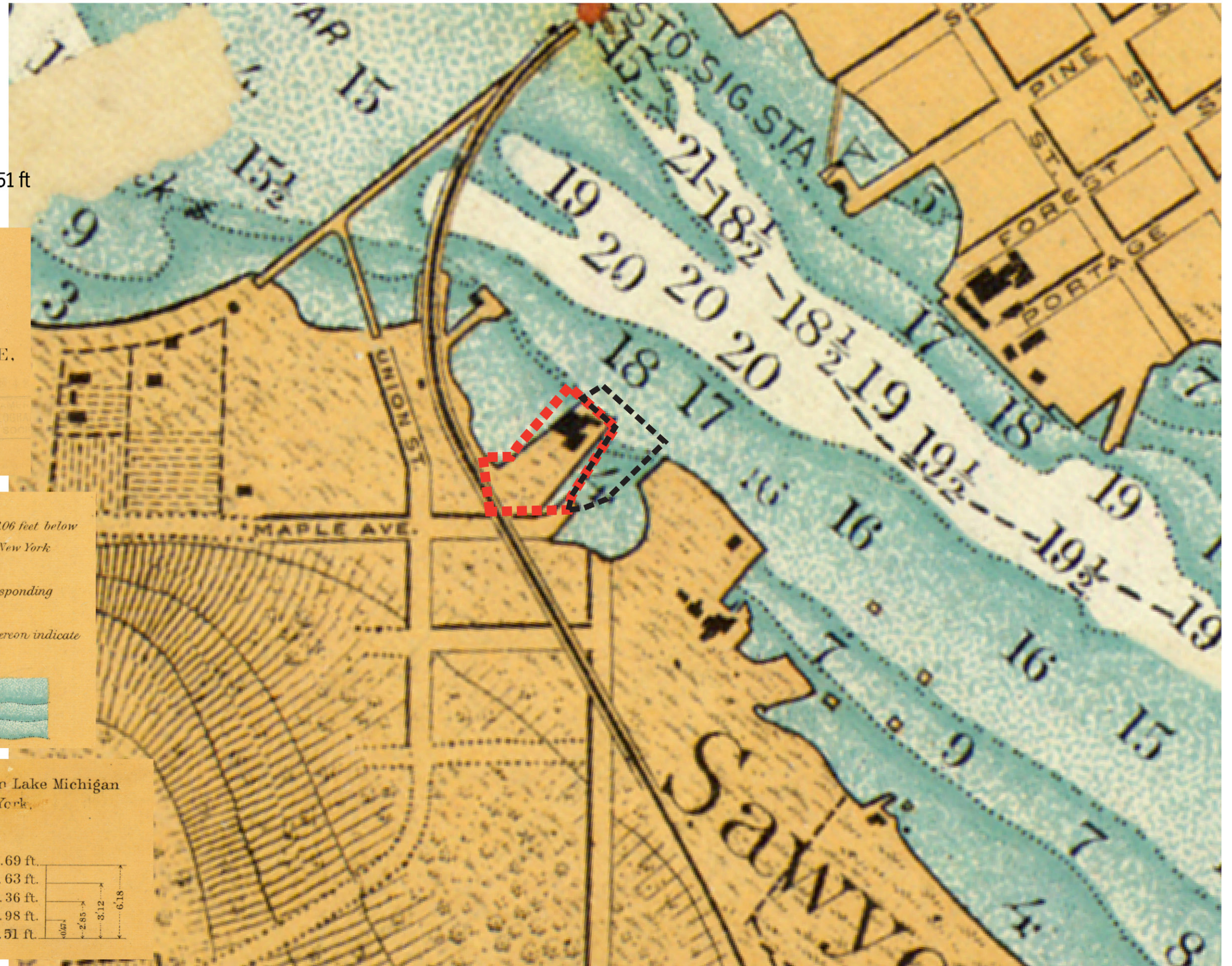
1901-1904

US Army Corps of Engineers

Mean Stage: 581.36 ft

Plane of Reference this chart: 581.63 ft

Low Water Datum for all new charts: 578.51 ft



SURVEY OF THE NORTHERN AND NORTHWESTERN LAKES
 Made in obedience to Acts of Congress
 and orders from
 HEADQUARTERS CORPS OF ENGINEERS, U.S. ARMY.

STURGEON BAY, CANAL AND HARBOR OF REFUGE, LAKE MICHIGAN.

Prepared under the direction of
 Major W.L. FISK, Corps of Engineers, U.S. Army.
 in 1901 & 1904.
 SCALE - 1: 25,000

NOTES.

Soundings, in feet, are reduced to a plane, which is 3.06 feet below highwater of 1838 and 581.63 feet above mean tide at New York (adjusted levels of 1903.)

The limits of 6, 12 and 18 ft. depths are indicated by corresponding curves, and these water areas are tinted in blue.

Topographic contours are 20 ft. apart and the figures thereon indicate elevations in feet above mean lake level.

6 ft. contours
 12 ft. "
 18 ft. "

Comparative Elevations of Water Levels on Lake Michigan referred to Mean Tide at New York, (adjusted Levels of 1903.)

High Water of 1838.	584.69 ft.
Plane of reference of this Chart	581.63 ft.
Mean stage 1860-1903, both inclusive.	581.36 ft.
Lowest recorded monthly mean (Dec. 1895).	578.98 ft.
Standard Low Water adopted for all New Charts.	578.51 ft.

1908

US Army Corps of Engineers

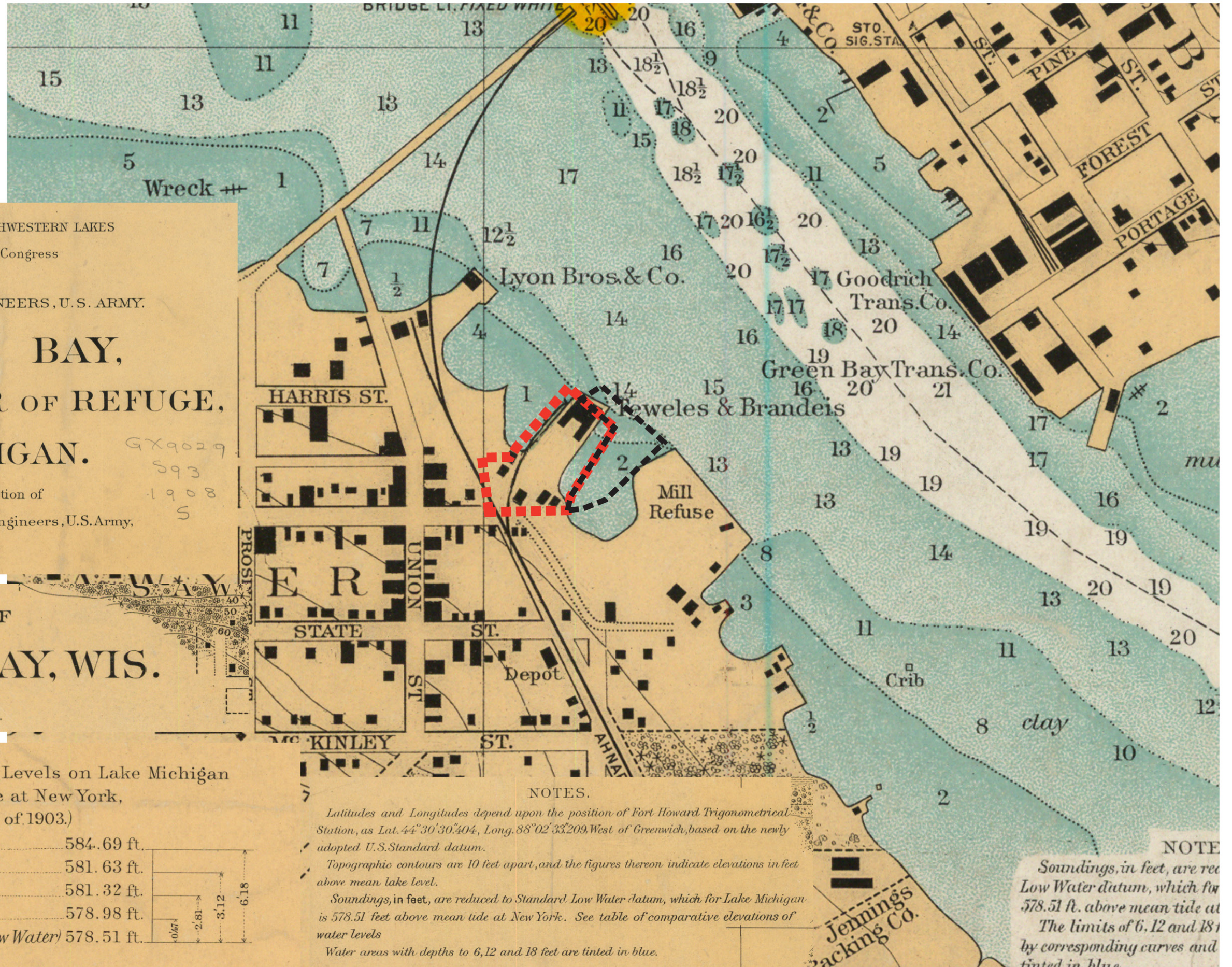
Mean Stage: 581.32 ft

Plane of Reference this chart: 578.51 ft

Low Water Datum: 578.51 ft

 Parcel 92

 Parcel 100



SURVEY OF THE NORTHERN AND NORTHWESTERN LAKES
 Made in obedience to Acts of Congress
 and orders from
 HEADQUARTERS CORPS OF ENGINEERS, U. S. ARMY.

STURGEON BAY, CANAL AND HARBOR OF REFUGE, LAKE MICHIGAN.

Prepared under the direction of
 Major CHARLES KELLER, Corps of Engineers, U.S. Army,
 in 1908.

*GX9029
 593
 1908
 S*

VICINITY OF
STURGEON BAY, WIS.

SCALE, 1:10,000.

Comparative Elevations of Water Levels on Lake Michigan referred to Mean Tide at New York, (adjusted Levels of 1903.)

High Water of 1838.....	584.69 ft.
Plane of reference for Harbor improvements.....	581.63 ft.
Mean stage 1860-1907 both inclusive.....	581.32 ft.
Lowest recorded monthly mean (Dec.1895).....	578.98 ft.
Plane of reference of this Chart (Standard Low Water).....	578.51 ft.

NOTES.

Latitudes and Longitudes depend upon the position of Fort Howard Trigonometrical Station, as Lat. 44°30'30".404, Long. 88°02'33".209, West of Greenwich, based on the newly adopted U.S. Standard datum.

Topographic contours are 10 feet apart, and the figures thereon indicate elevations in feet above mean lake level.

Soundings, in feet, are reduced to Standard Low Water datum, which for Lake Michigan is 578.51 feet above mean tide at New York. See table of comparative elevations of water levels

Water areas with depths to 6, 12 and 18 feet are tinted in blue.

NOTE
Soundings, in feet, are reduced to Standard Low Water datum, which for Lake Michigan is 578.51 feet above mean tide at New York. The limits of 6, 12 and 18 feet are indicated by corresponding curves and tinted in blue.

1908-1914

US Army Corps of Engineers

Mean Stage: 581.22 ft

Plane of Reference this chart: 578.50 ft
 Low Water Datum: 578.50 ft

 Parcel 92

 Parcel 100

SURVEY OF THE NORTHERN AND NORTHWESTERN LAKES
 Made in obedience to Acts of Congress
 and orders from
 HEADQUARTERS CORPS OF ENGINEERS, U.S. ARMY

STURGEON BAY CANAL AND HARBOR OF REFUGE LAKE MICHIGAN

Prepared under the direction of
 Major CHARLES KELLER, Corps of Engineers, U.S. Army,
 in 1908.

Additions and Corrections under the direction of
 Colonel J.C. SANFORD, Corps of Engineers, U.S. Army in
 1914.

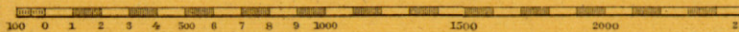
SCALE 1:30,000.

STURGEON BAY, WIS.

SCALE 1:10,000.

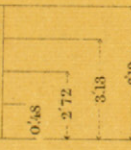
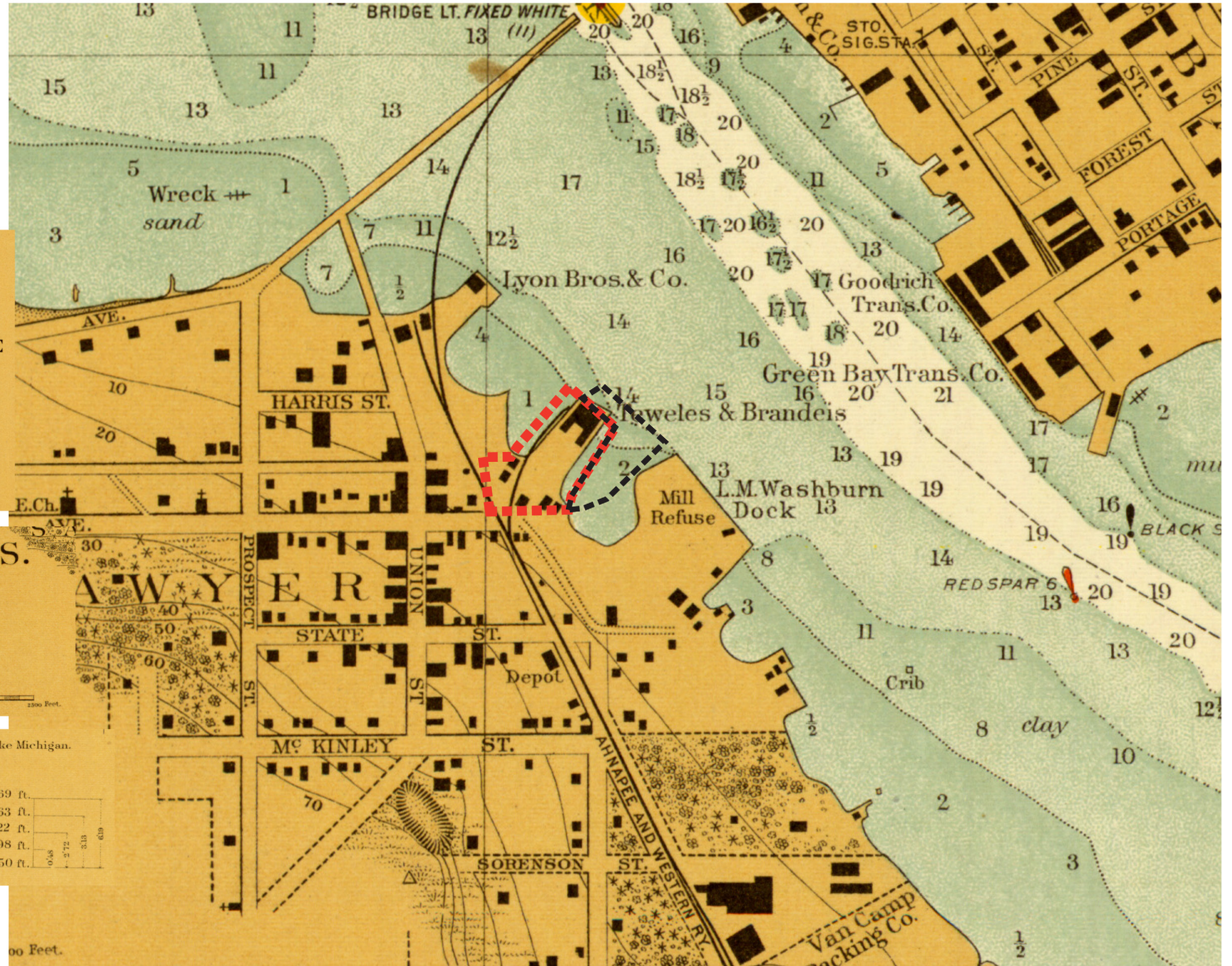
NOTE.
 Soundings in feet, are reduced to Standard
 Low Water datum, which for Lake Michigan
 is 578.50 feet above mean tide at New York.
 The limits of 6, 12, and 18 ft. depths are
 indicated by corresponding curves.

SCALE OF FEET



Comparative Elevations of Water Levels on Lake Michigan,
 referred to Mean Tide at New York
 (adjusted Levels of 1903.)

High Water of 1838,	584.69 ft.
Mean stage 1860-1875 (Datum for Harbor Improvement)	581.63 ft.
Mean stage 1860-1913, both inclusive,	581.22 ft.
Lowest recorded monthly mean (Dec. 1895),	578.98 ft.
Plane of reference of this chart (Standard Low Water)	578.50 ft.

1925 Survey

US Army Corps of Engineers

Mean Stage: 581.07 ft

Plane of Reference this chart: 578.50 ft

Low Water Datum: 578.50 ft

(US Army Corps Lake Michigan Ordinary High Water Mark: 581.50 ft, <http://www.lre.usace.army.mil/Missions/Great-Lakes-Information/Links/Ordinary-High-Water-Mark-and-Low-Water-Datum/>)

 Parcel 92

 Parcel 100

SURVEY OF THE NORTHERN AND NORTHWESTERN LAKES
 Made in obedience to Acts of Congress
 and orders of
 THE CHIEF OF ENGINEERS, U.S. ARMY

STURGEON BAY

CANAL AND HARBOR OF REFUGE




LAKE MICHIGAN

1925

SCALE 1:10,000

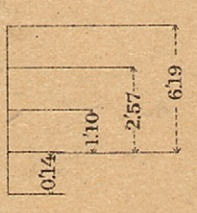
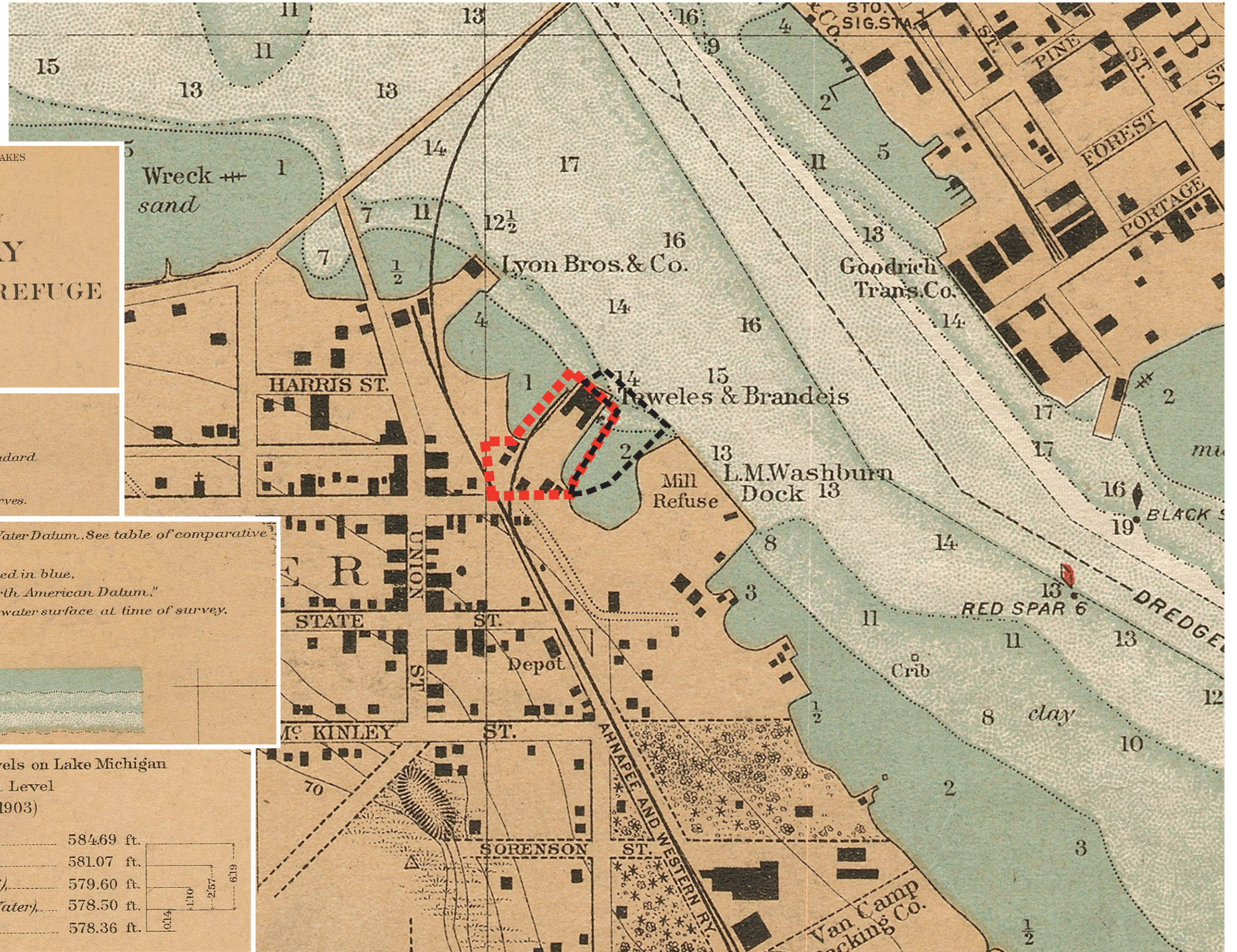
NOTE
 Soundings in feet, are referred to Standard Low Water datum.
 The limits of 6, 12 and 18 ft depths are indicated by corresponding curves.

Soundings, in feet, are referred to Standard Low Water Datum. See table of comparative elevations of water levels.
 Water areas with depths to 6, 12, and 18 feet are tinted in blue.
 Latitudes and Longitudes are based on the "North American Datum."
 Shore line and land contours are referred to the water surface at time of survey.
 Topographic contour interval 10 feet.

6 ft. contours 
 12 ft. " 
 18 ft. " 

Comparative Elevations of Water Levels on Lake Michigan referred to Mean Sea Level (adjusted Levels of 1903)

High Water of 1838,.....	584.69 ft.
Mean stage 1860 -1924, both inclusive,.....	581.07 ft.
Low water datum for Harbor Improvements, (1916),.....	579.60 ft.
Plane of reference of this chart, (Standard Low Water),.....	578.50 ft.
Lowest recorded monthly mean, (Dec. 1924),.....	578.36 ft.

1942

US Army Corps of Engineers

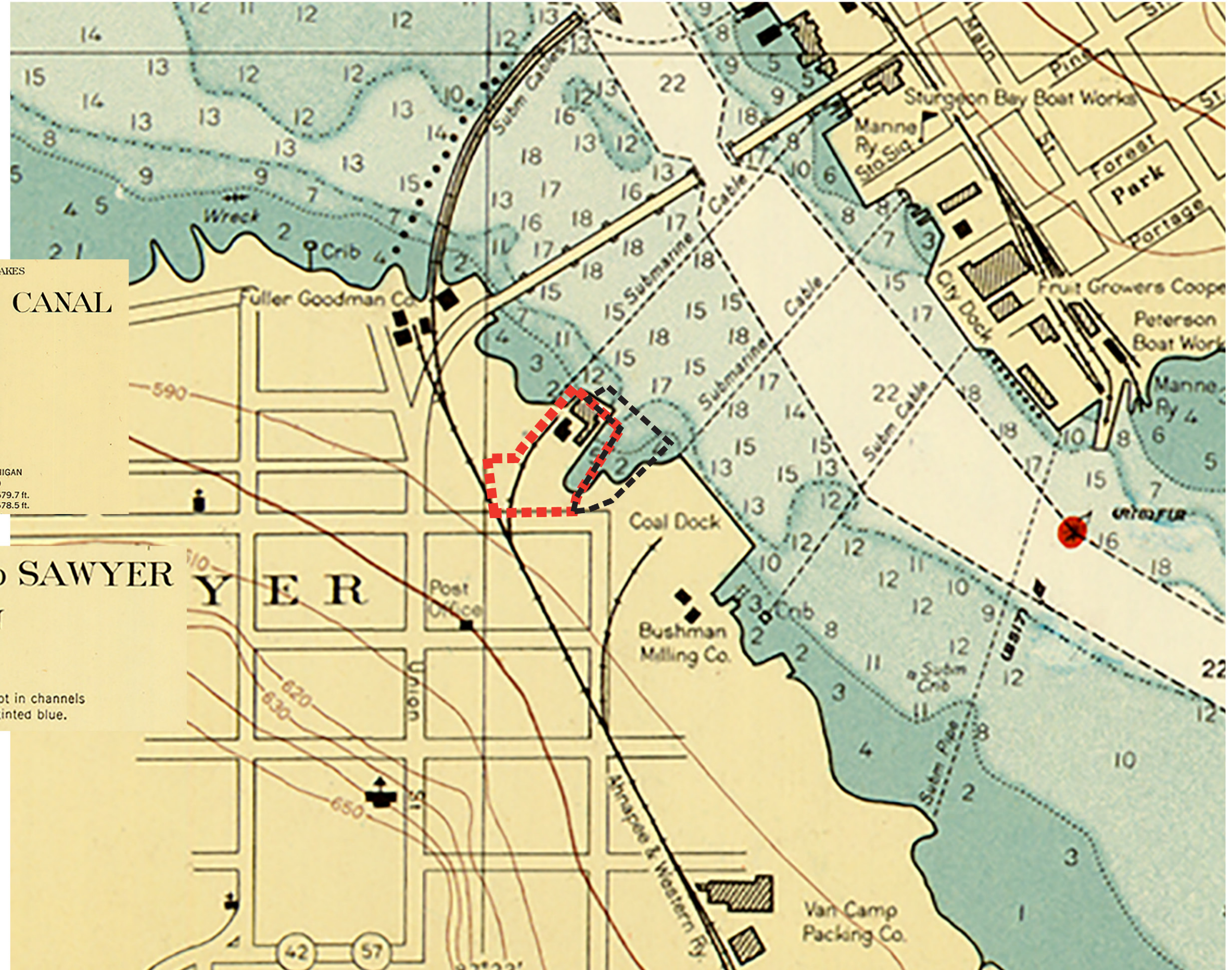
Mean Stage: 579.7 ft

Plane of Reference this chart: 578.5 ft
Low Water Datum: 578.5 ft

 Parcel 92  Parcel 100

SURVEY OF THE NORTHERN AND NORTHWESTERN LAKES
STURGEON BAY AND CANAL
LAKE MICHIGAN
1942
POLYCONIC PROJECTION
SCALE 1:30,000
DEPTHS IN FEET
NOTES
COMPARATIVE ELEVATIONS OF WATER LEVELS ON LAKE MICHIGAN
(referred to Mean Tide at New York; adjusted levels of 1935)
Mean stage 1900-1941, both inclusive.....579.7 ft.
PLANE OF REFERENCE OF THIS CHART (Low Water Datum).....578.5 ft.

STURGEON BAY AND SAWYER
WISCONSIN
SCALE 1:10,000
DEPTHS IN FEET
Areas with depths to 18 feet, except in channels
maintained by the United States, are tinted blue.



1950

US Army Corps of Engineers

Mean Stage: 579.8 ft

Plane of Reference this chart: 578.5 ft
Low Water Datum: 578.5 ft

(After February 1944 major fire that destroyed entire warehouse and parts of dock under warehouse)

 Parcel 92

 Parcel 100

U. S. LAKE SURVEY
SURVEY OF THE NORTHERN AND NORTHWESTERN LAKES

STURGEON BAY AND CANAL LAKE MICHIGAN

CHART No 728
1950
POLYCONIC PROJECTION
SCALE 1:30,000
DEPTHS IN FEET

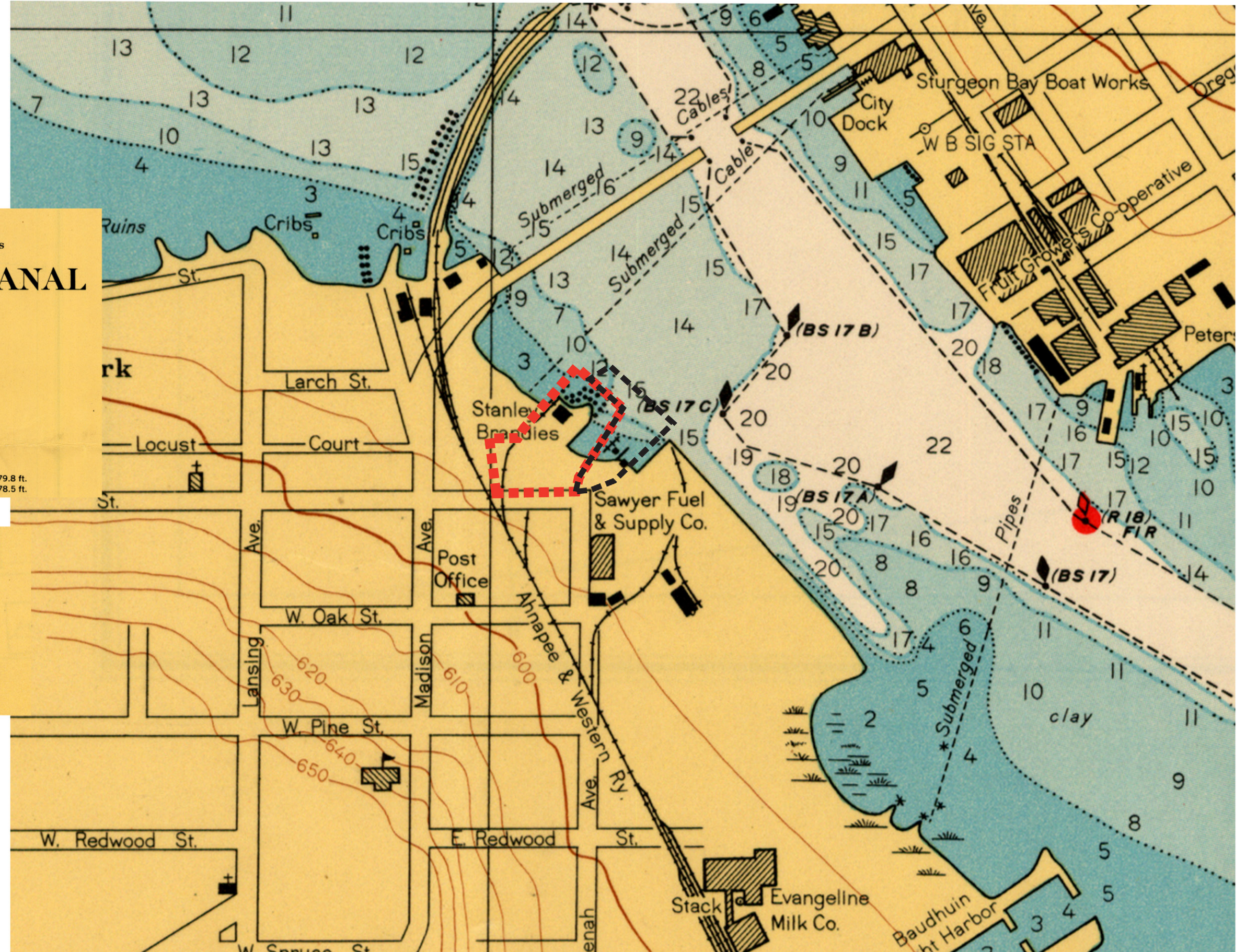
NOTES
COMPARATIVE ELEVATIONS ON LAKE MICHIGAN
(referred to Mean Tide at New York; 1935 Datum)

Mean stage 1900 - 1949, both inclusive	579.8 ft.
PLANE OF REFERENCE OF THIS CHART (Low Water Datum)	578.5 ft.

STURGEON BAY WISCONSIN

SCALE 1:10,000
DEPTHS IN FEET

Areas with depths to 18 feet, except in channels maintained by the United States, are tinted blue.



1963

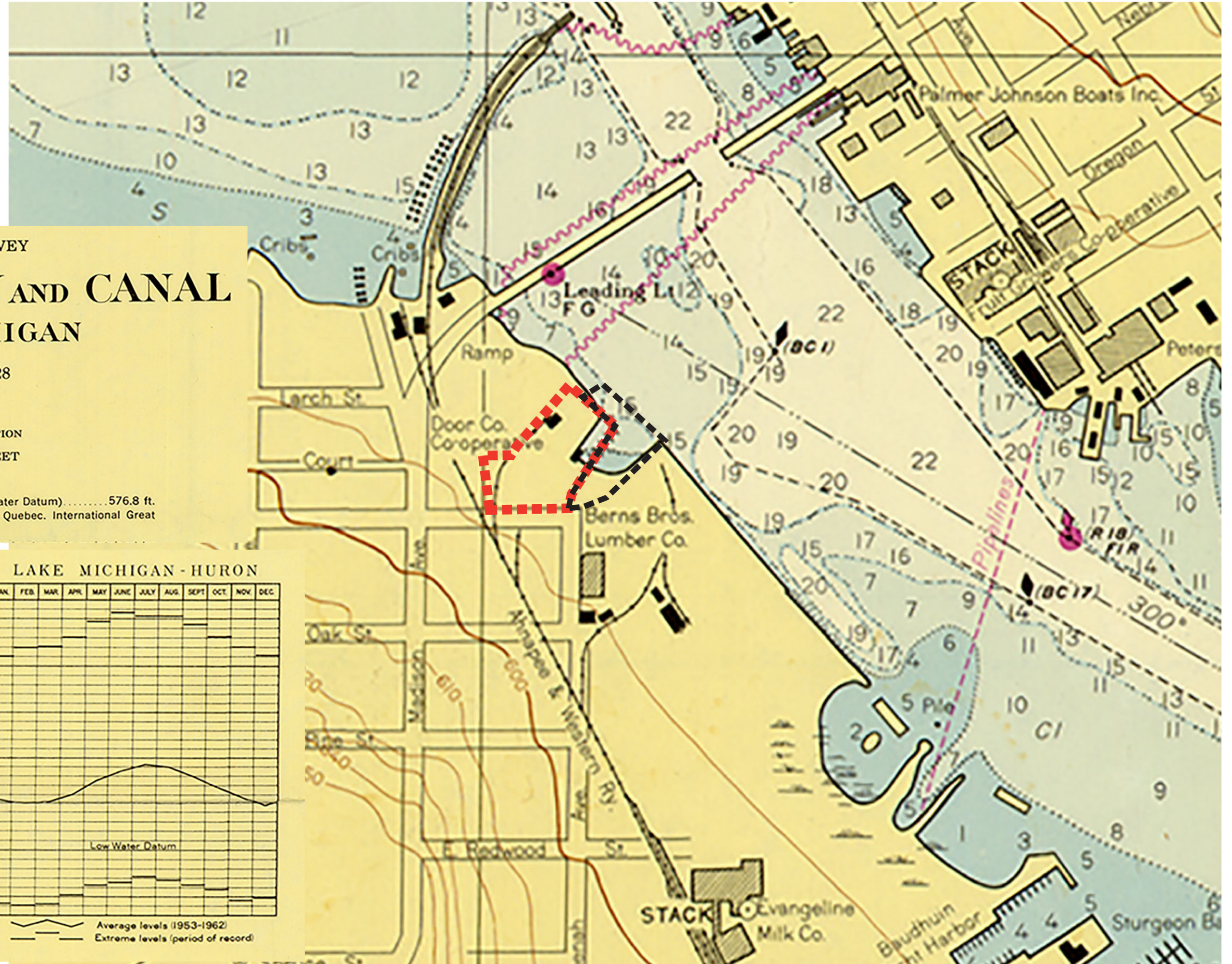
US Army Corps of Engineers

Shows municipal small-boat dock of the time (under parcel 92-100 common border)

 Parcel 92

 Parcel 100

Plane of Reference this chart: 576.8 ft
Low Water Datum: 576.8 ft



U. S. LAKE SURVEY

STURGEON BAY AND CANAL LAKE MICHIGAN

CHART NO. 728

1963

POLYCONIC PROJECTION
SOUNDINGS IN FEET

NOTES
PLANE OF REFERENCE OF THIS CHART (Low Water Datum) 576.8 ft.
Referred to mean water level at Father Point, Quebec. International Great
Lakes Datum (1955).

STURGEON BAY WISCONSIN

SCALE 1:10,000
SOUNDINGS IN FEET

Areas with depths to 18 feet, except in channels
maintained by the United States, are tinted blue.

FEET

