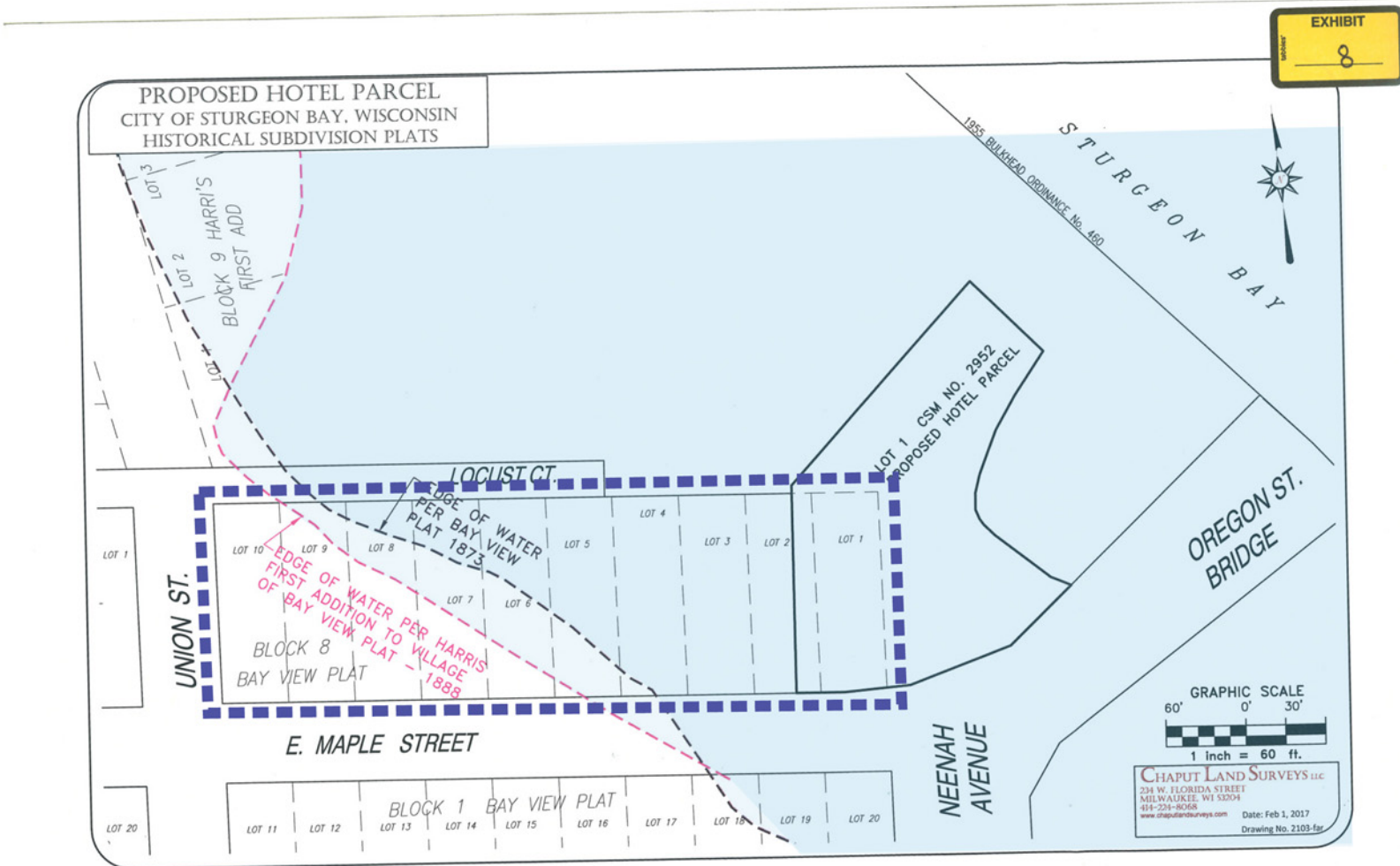


Exhibit #8, Expert Witness Chaput's overlay of the 1873 Plat of Bay View and 1888 Harris' First Addition to Village of Bay View Plat

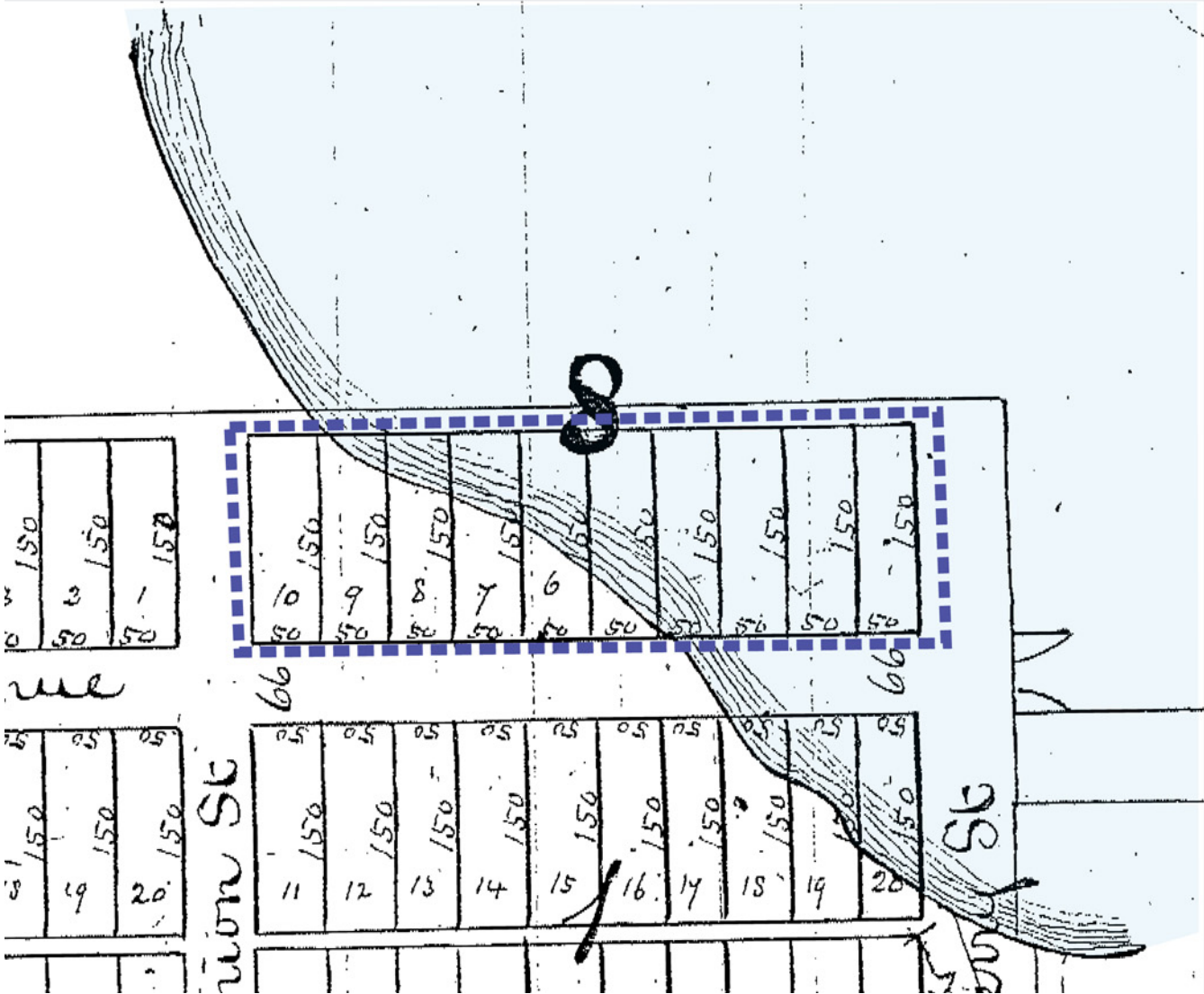


Lots 1-10 in Block 8 of the Bay View Plat (along the water) are outlined in these maps. These lots, along with all the adjoining lots and blocks, were first surveyed in 1873, and have been perpetuated by surveyors through to the present day. You can easily see them on the Door County Land Information Office webmap - zoom in, and turn on 'plats' under 'Parcels' on the layers. Yes, speculative land developer and dock builder Joseph Harris had some of his subdivision lots platted into the water - where he was going to build a dock, eventually a quite large dock, eventually containing the still-existing Teweles & Brandeis grain elevator.

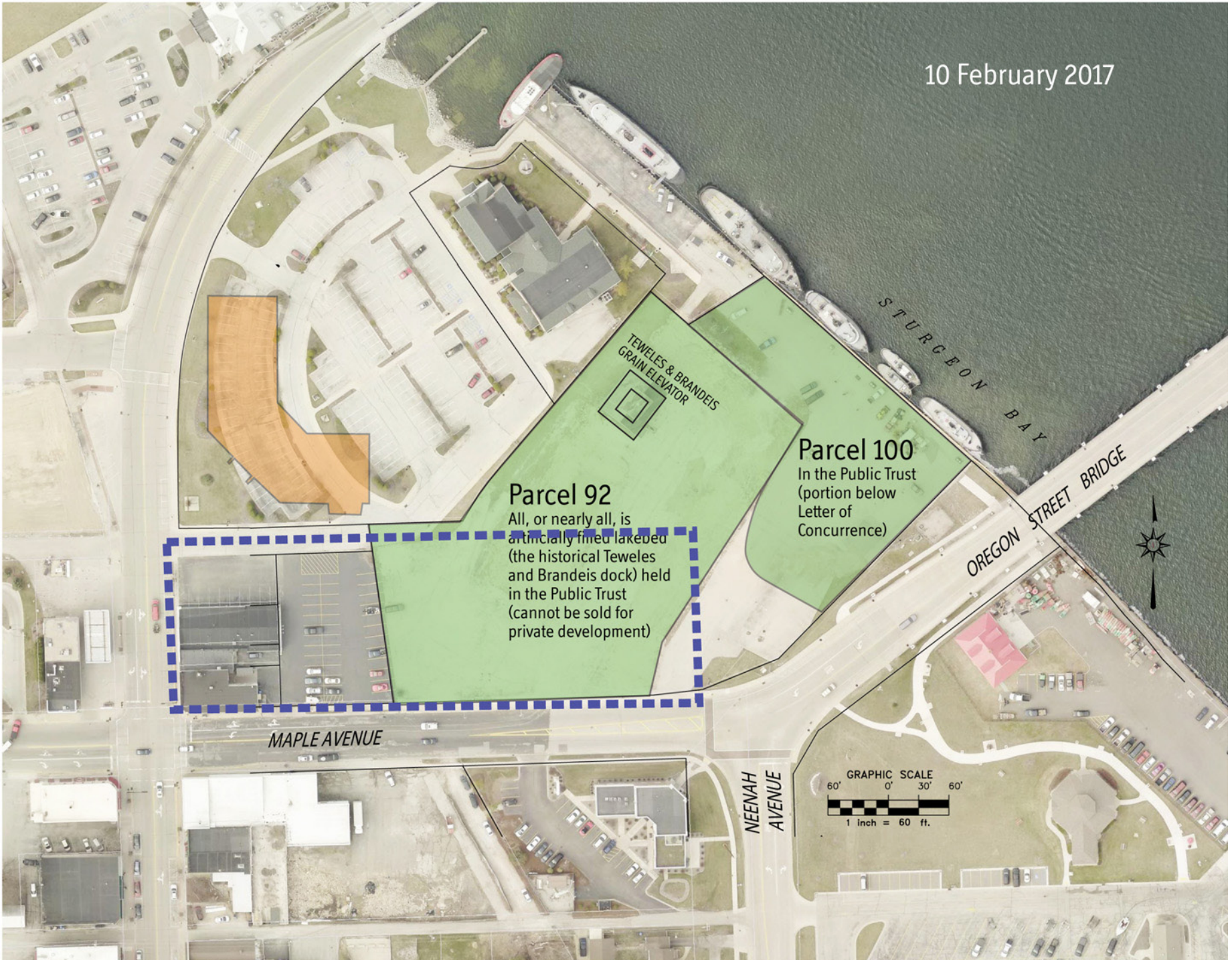
Straight from the Door County Land Information Office webmap. Zoom in and turn on layer "Plat" under "Parcels".



1873 Plat of Bay View



10 February 2017



Parcel 92
All, or nearly all, is
artificially filled lakebed
(the historical Teweles
and Brandeis dock) held
in the Public Trust
(cannot be sold for
private development)

Parcel 100
In the Public Trust
(portion below
Letter of
Concurrence)

TEWELES & BRANDEIS
GRAIN ELEVATOR

MAPLE AVENUE

NEENAH
AVENUE

OREGON STREET BRIDGE

STURGEON BAY

