

1885 Sanborn
Wisconsin Historical Society

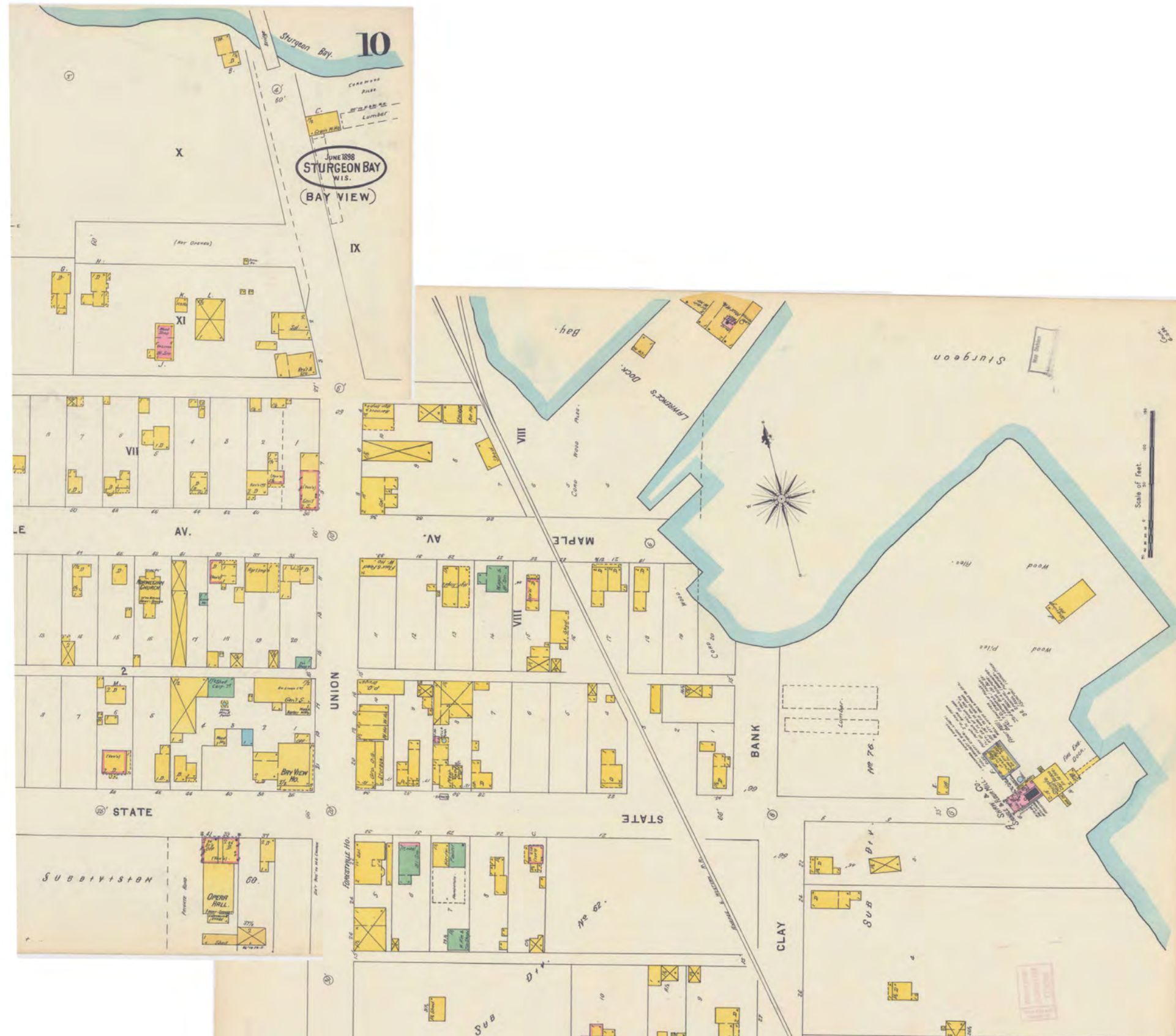


1891 Sanborn
Wisconsin Historical Society



1898 Sanborn


Wisconsin Historical Society



1901-1904 ACOE
 UW-Milwaukee
 AGS Library



WAR DEPARTMENT.
 CORPS OF ENGINEERS.



SURVEY OF THE NORTHERN AND NORTHWESTERN LAKES
 Made in obedience to Acts of Congress
 and orders from
 HEADQUARTERS CORPS OF ENGINEERS, U. S. ARMY.

**STURGEON BAY,
 CANAL AND HARBOR OF REFUGE,
 LAKE MICHIGAN.**




Prepared under the direction of
 Major W.L. FISK, Corps of Engineers, U.S. Army.
 in 1901 & 1904.
 SCALE -1: 25,000

NOTES.

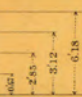
Soundings, in feet, are reduced to a plane, which is 306 feet below highwater of 1838 and 581.63 feet above mean tide at New York (adjusted levels of 1903.)

The limits of 6, 12 and 18 ft. depths are indicated by corresponding curves, and these water areas are tinted in blue.

Topographic contours are 20 ft. apart and the figures thereon indicate elevations in feet above mean lake level.

6 ft. contours	
12 ft. "	
18 ft. "	

Comparative Elevations of Water Levels on Lake Michigan referred to Mean Tide at New York (adjusted Levels of 1903.)

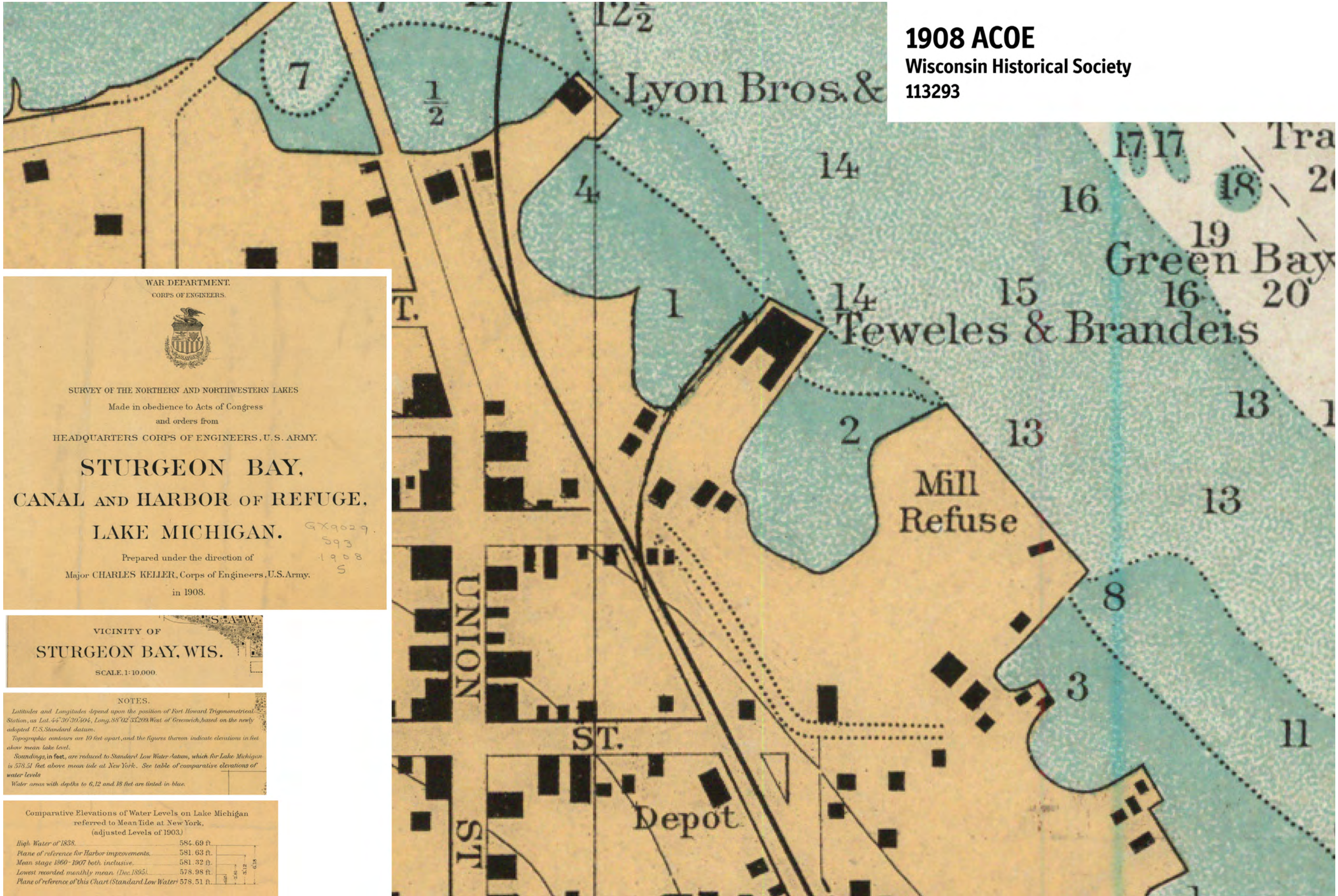
High Water of 1838.	584.69 ft.	
Plane of reference of this Chart	581.63 ft.	
Mean stage 1860-1903, both inclusive.	581.36 ft.	
Lowest recorded monthly mean (Dec. 1895).	578.98 ft.	
Standard Low Water adopted for all New Charts.	578.51 ft.	

1904 Sanborn


Wisconsin Historical Society



1908 ACOE
 Wisconsin Historical Society
 113293



WAR DEPARTMENT.
 CORPS OF ENGINEERS.



SURVEY OF THE NORTHERN AND NORTHWESTERN LAKES
 Made in obedience to Acts of Congress
 and orders from
 HEADQUARTERS CORPS OF ENGINEERS, U.S. ARMY.

**STURGEON BAY,
 CANAL AND HARBOR OF REFUGE,
 LAKE MICHIGAN.**

Prepared under the direction of
 Major CHARLES KELLER, Corps of Engineers, U.S. Army,
 in 1908.

GX9029
 593
 1908
 5

VICINITY OF
STURGEON BAY, WIS.

SCALE 1:10,000.

NOTES.

Latitudes and Longitudes depend upon the position of Fort Howard Trigonometrical Station, as Lat. 44°30'30.404", Long. 88°02'33.208" West of Greenwich, based on the newly adopted U.S. Standard datum.

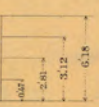
Topographic contours are 10 feet apart, and the figures thereon indicate elevations in feet above mean lake level.

Soundings, in feet, are reduced to Standard Low Water datum, which for Lake Michigan is 578.51 feet above mean tide at New York. See table of comparative elevations of water levels.

Water areas with depths to 6, 12 and 18 feet are lined in blue.

Comparative Elevations of Water Levels on Lake Michigan referred to Mean Tide at New York, (adjusted Levels of 1903).

High Water of 1838.	584.69 ft.
Plane of reference for Harbor improvements.	581.63 ft.
Mean stage 1860-1907 both inclusive.	581.32 ft.
Lowest recorded monthly mean (Dec. 1895).	578.98 ft.
Plane of reference of this Chart (Standard Low Water)	578.51 ft.



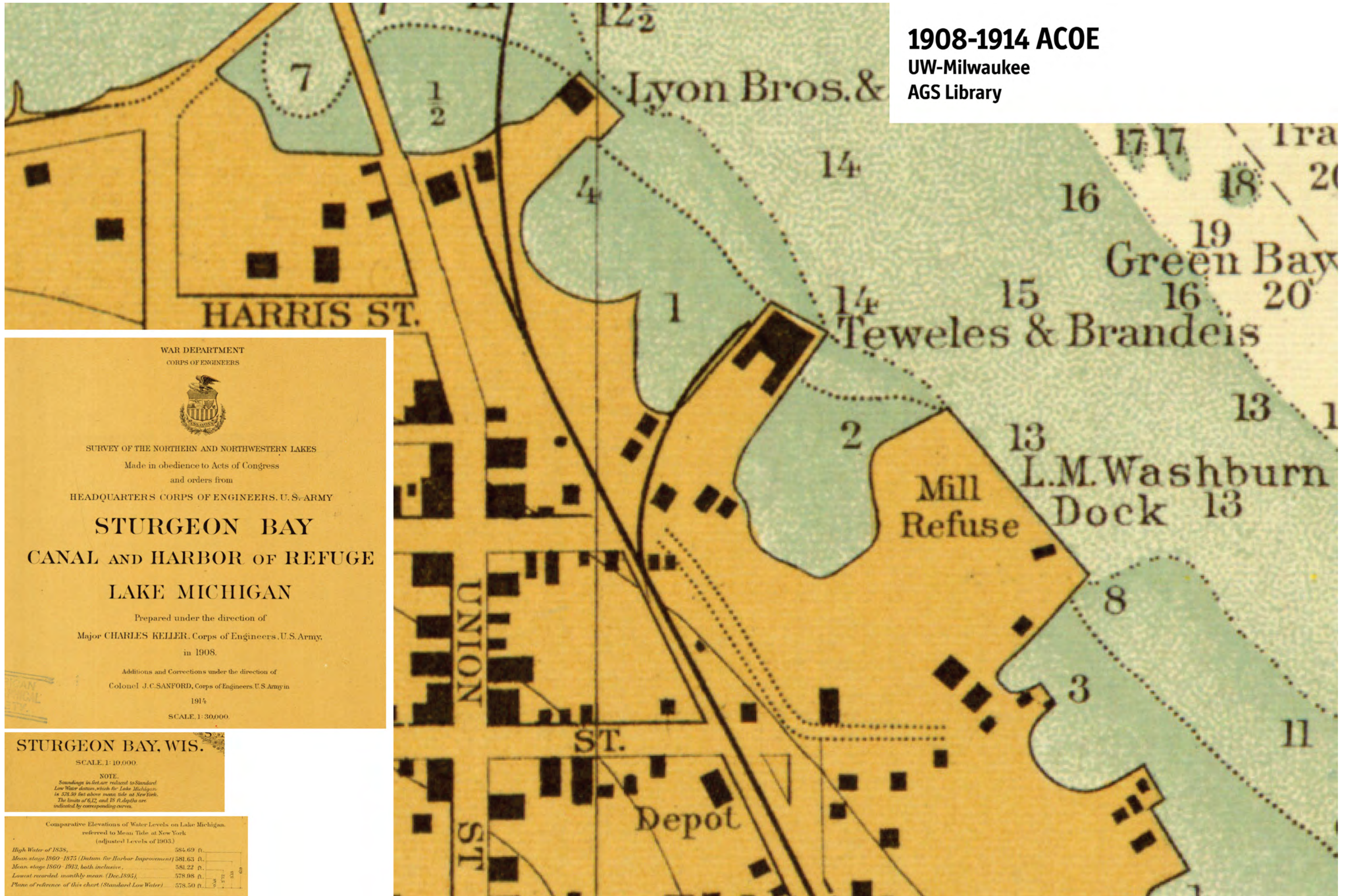
1911 Sanborn
Wisconsin Historical Society



1908-1914 ACOE

UW-Milwaukee

AGS Library



WAR DEPARTMENT
CORPS OF ENGINEERS



SURVEY OF THE NORTHERN AND NORTHWESTERN LAKES

Made in obedience to Acts of Congress
and orders from

HEADQUARTERS CORPS OF ENGINEERS, U.S. ARMY

STURGEON BAY CANAL AND HARBOR OF REFUGE LAKE MICHIGAN

Prepared under the direction of

Major CHARLES KELLER, Corps of Engineers, U.S. Army,
in 1908.

Additions and Corrections under the direction of
Colonel J.C. SANFORD, Corps of Engineers, U.S. Army in

1914

SCALE 1:30,000.

STURGEON BAY, WIS.

SCALE 1:10,000.

NOTE.

Soundings in feet are reduced to Standard
Low Water datum, which for Lake Michigan
is 528.50 feet above mean tide at New York.
The limits of 6, 12, and 18 f. depths are
indicated by corresponding curves.

Comparative Elevations of Water Levels on Lake Michigan,
referred to Mean Tide at New York
(adjusted Levels of 1903.)

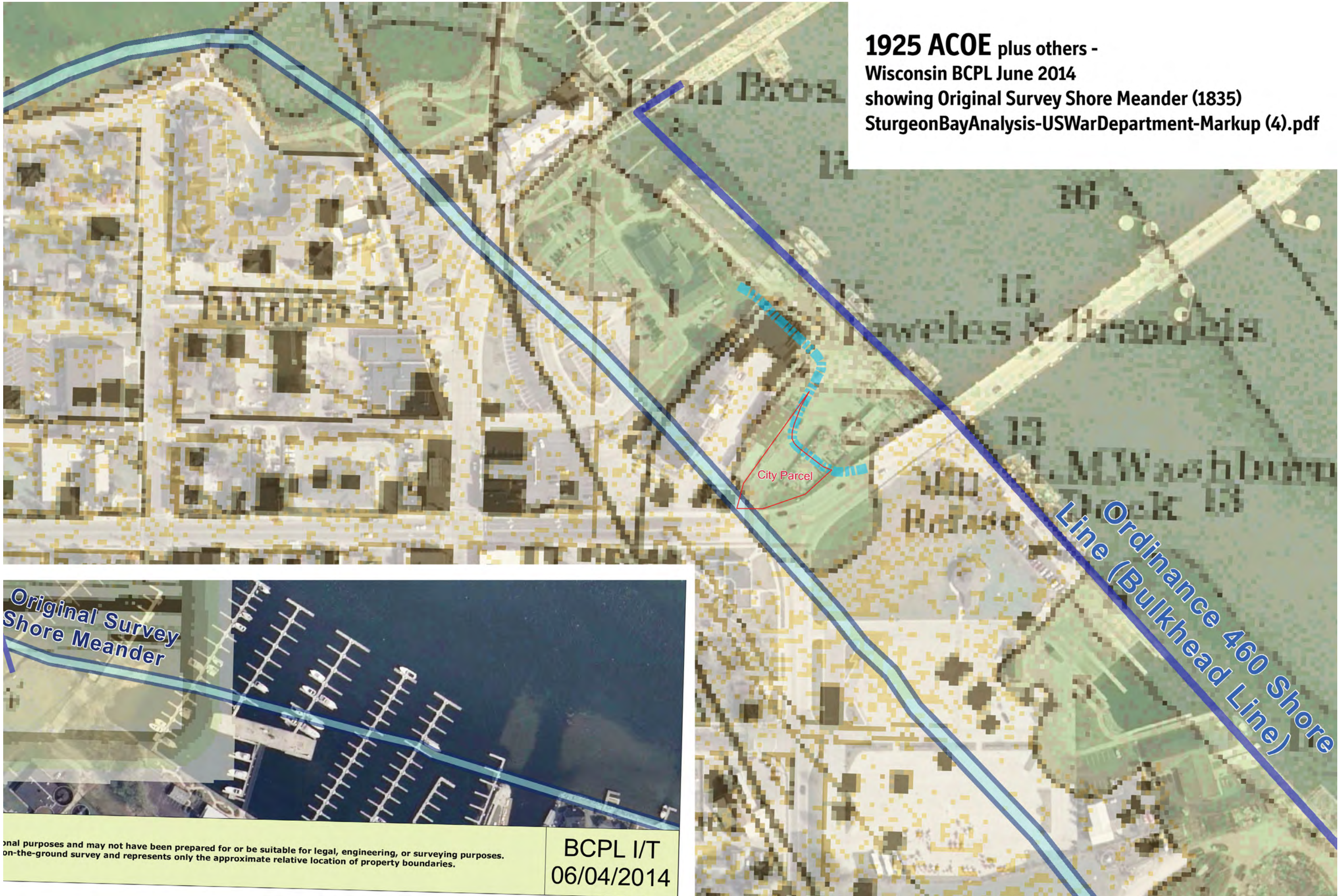
High Water of 1838,	584.69 ft.
Mean stage 1860-1875 (Datum for Harbor Improvement)	581.63 ft.
Mean stage 1860-1913, both inclusive,	581.22 ft.
Lowest recorded, monthly mean (Dec. 1895),	578.98 ft.
Plane of reference of this chart (Standard Low Water)	578.50 ft.

1919 Sanborn

Wisconsin Historical Society



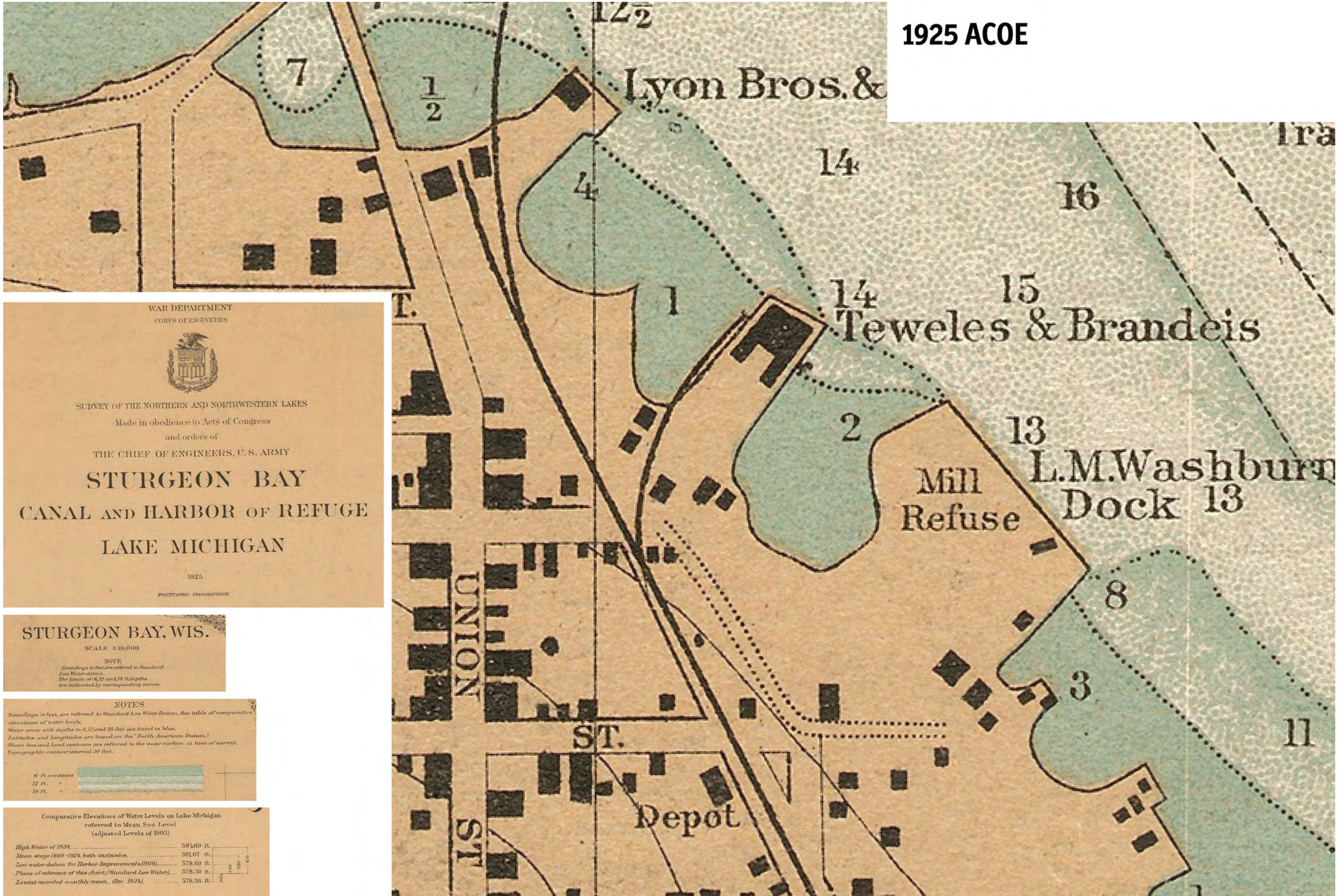
1925 ACOE plus others -
Wisconsin BCPL June 2014
showing Original Survey Shore Meander (1835)
SturgeonBayAnalysis-USWarDepartment-Markup (4).pdf




onal purposes and may not have been prepared for or be suitable for legal, engineering, or surveying purposes.
on-the-ground survey and represents only the approximate relative location of property boundaries.

BCPL I/T
06/04/2014

1925 ACOE



WAR DEPARTMENT
CORPS OF ENGINEERS



SURVEY OF THE NORTHERN AND NORTHWESTERN LAKES
Made in obedience to Acts of Congress
and orders of
THE CHIEF OF ENGINEERS, U.S. ARMY

STURGEON BAY

CANAL AND HARBOR OF REFUGE

LAKE MICHIGAN

1925


POLYCONIC PROJECTION

STURGEON BAY, WIS.

SCALE 1:10,000

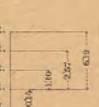
NOTE
Soundings in feet, are referred to Standard Low Water datum.
The limits of 6, 12 and 18 ft depths are indicated by corresponding curves.

NOTES
Soundings, in feet, are referred to Standard Low Water Datum. See table of comparative elevations of water levels.
Water areas with depths to 6, 12 and 18 feet are tinted in blue.
Latitudes and Longitudes are based on the "North American Datum."
Shore line and land contours are referred to the water surface at time of survey.
Topographic contour interval 10 feet.

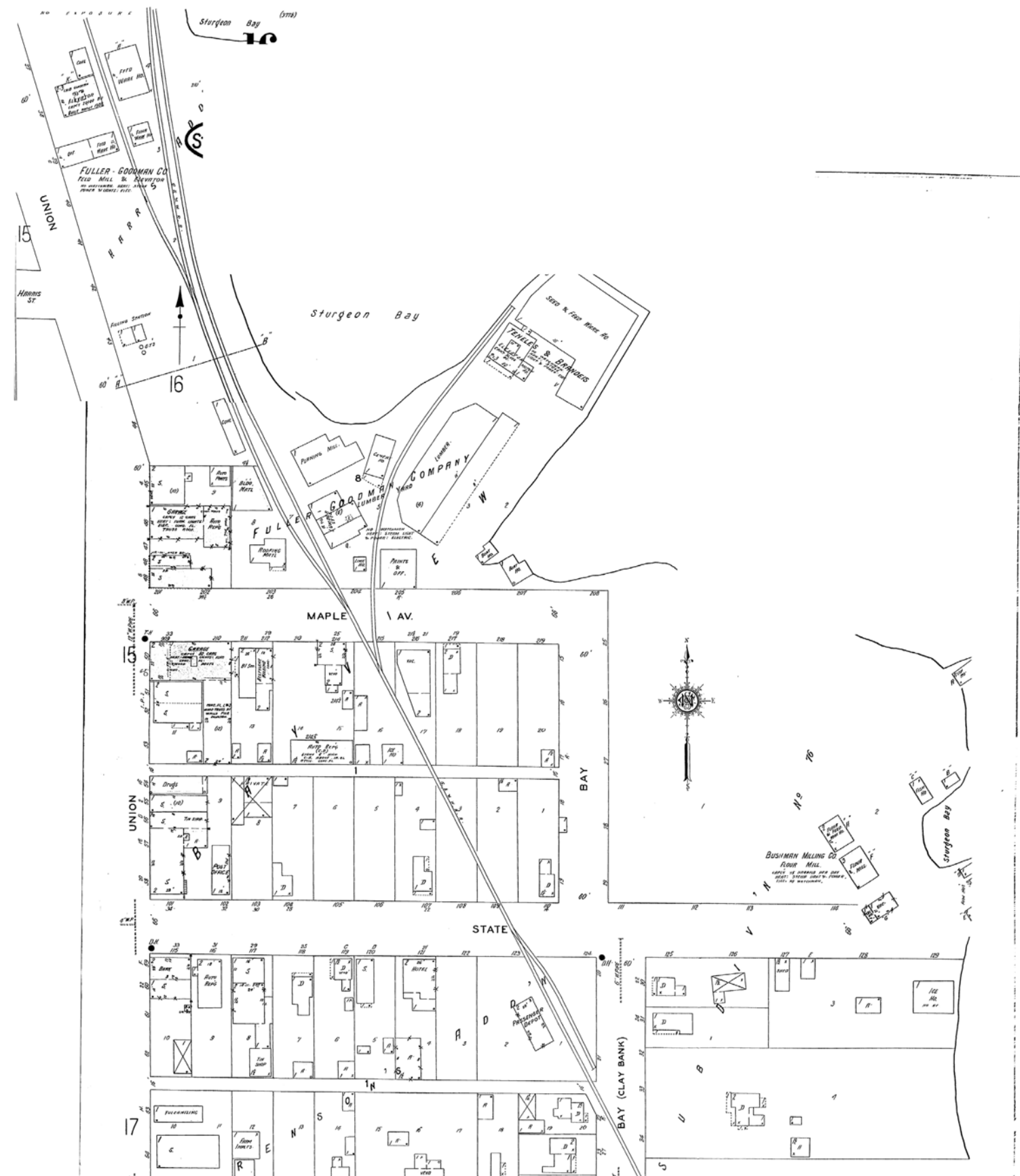


Comparative Elevations of Water Levels on Lake Michigan referred to Mean Sea Level (adjusted Levels of 1903)

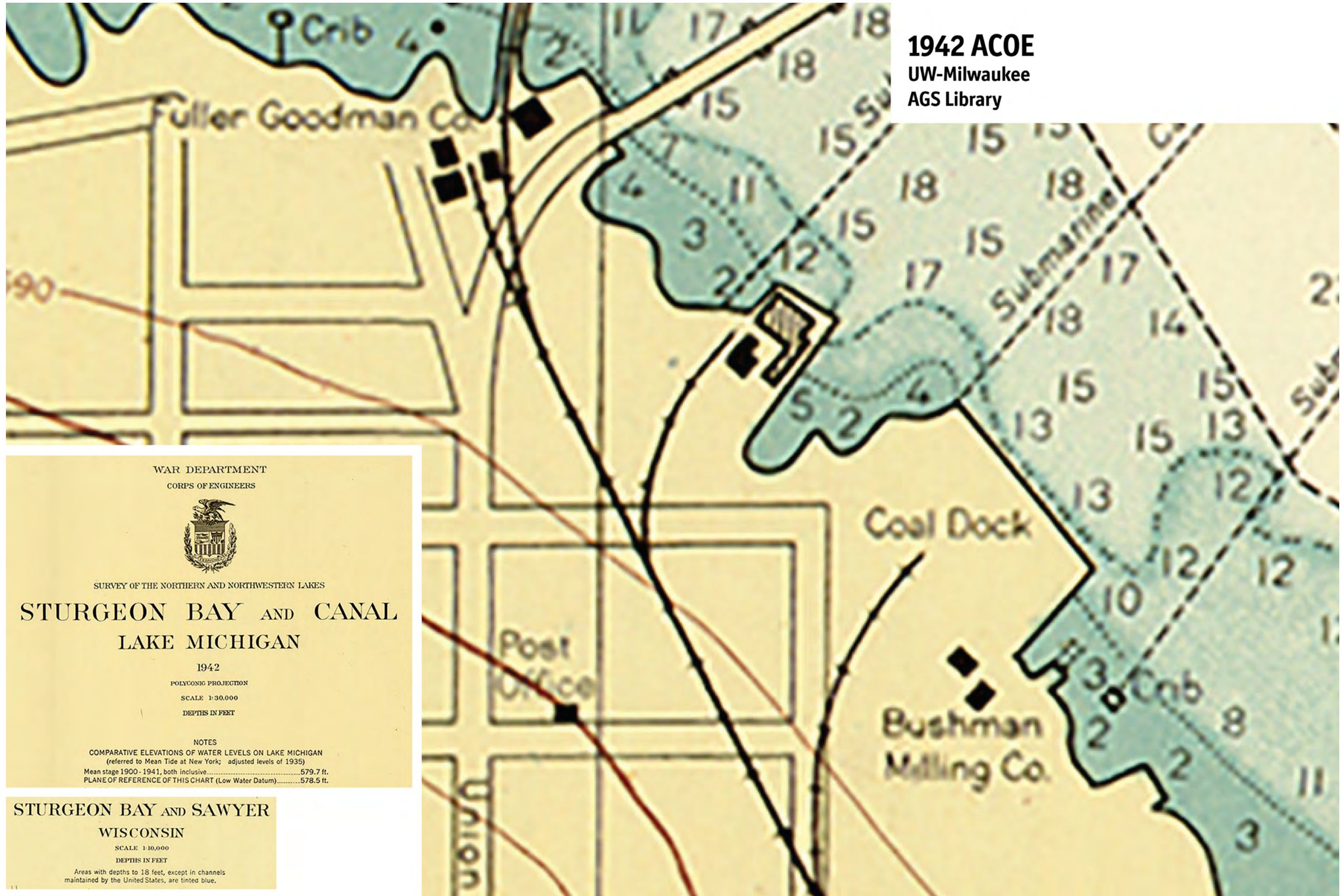
High Water of 1838	584.69 ft.
Mean stage 1860-1924, both inclusive	581.07 ft.
Low water datum for Harbor Improvements (1916)	579.60 ft.
Plane of reference of this chart (Standard Low Water)	578.50 ft.
Lowest recorded monthly mean (Dec. 1924)	578.36 ft.




1928 Sanborn
UW-Milwaukee
AGS Library



1942 ACOE
UW-Milwaukee
AGS Library



WAR DEPARTMENT
CORPS OF ENGINEERS

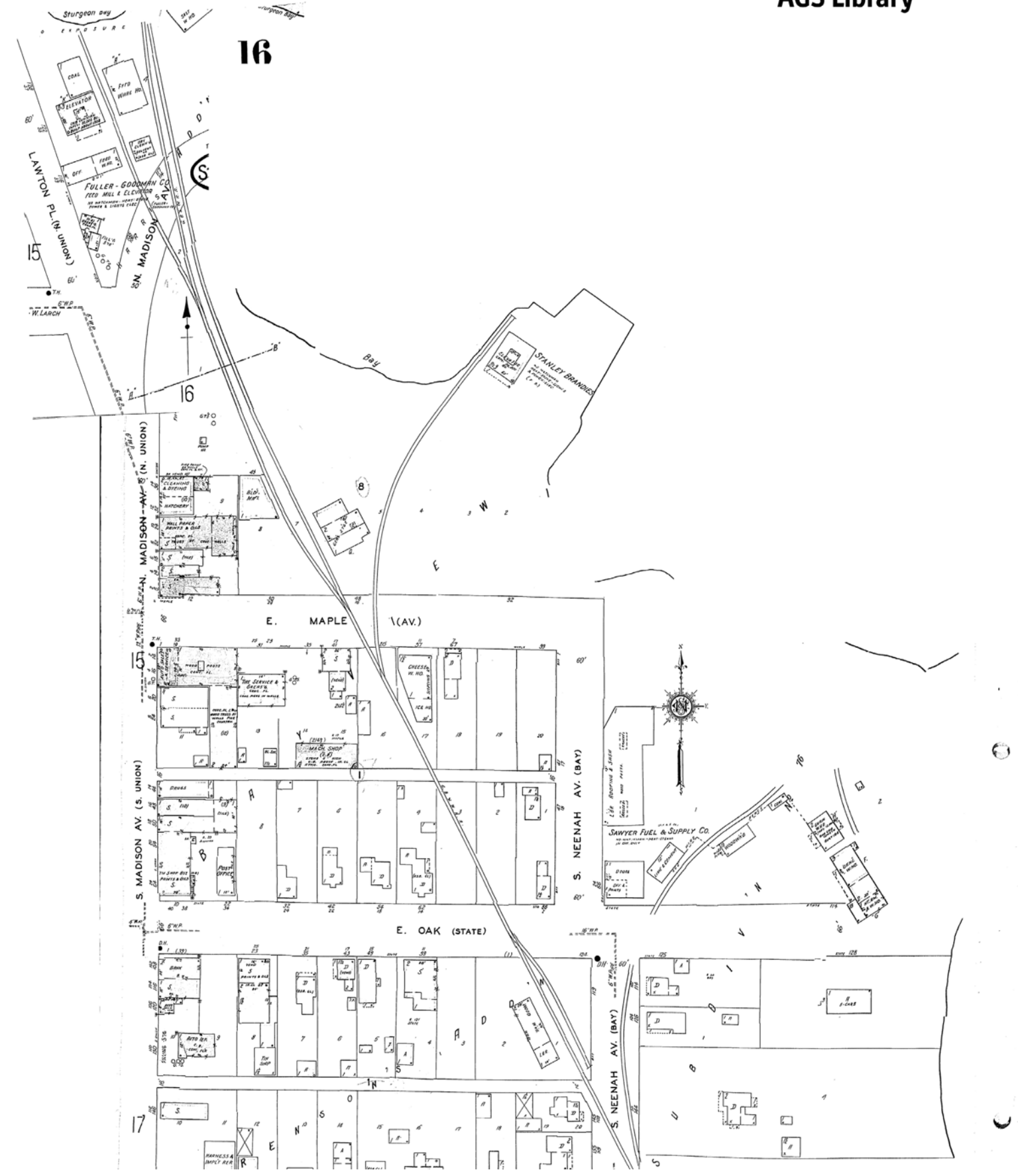


SURVEY OF THE NORTHERN AND NORTHWESTERN LAKES
STURGEON BAY AND CANAL
LAKE MICHIGAN
1942
POLYGONIC PROJECTION
SCALE 1:30,000
DEPTHS IN FEET

NOTES
COMPARATIVE ELEVATIONS OF WATER LEVELS ON LAKE MICHIGAN
(referred to Mean Tide at New York; adjusted levels of 1935)
Mean stage 1900-1941, both inclusive.....579.7 ft.
PLANE OF REFERENCE OF THIS CHART (Low Water Datum).....578.5 ft.

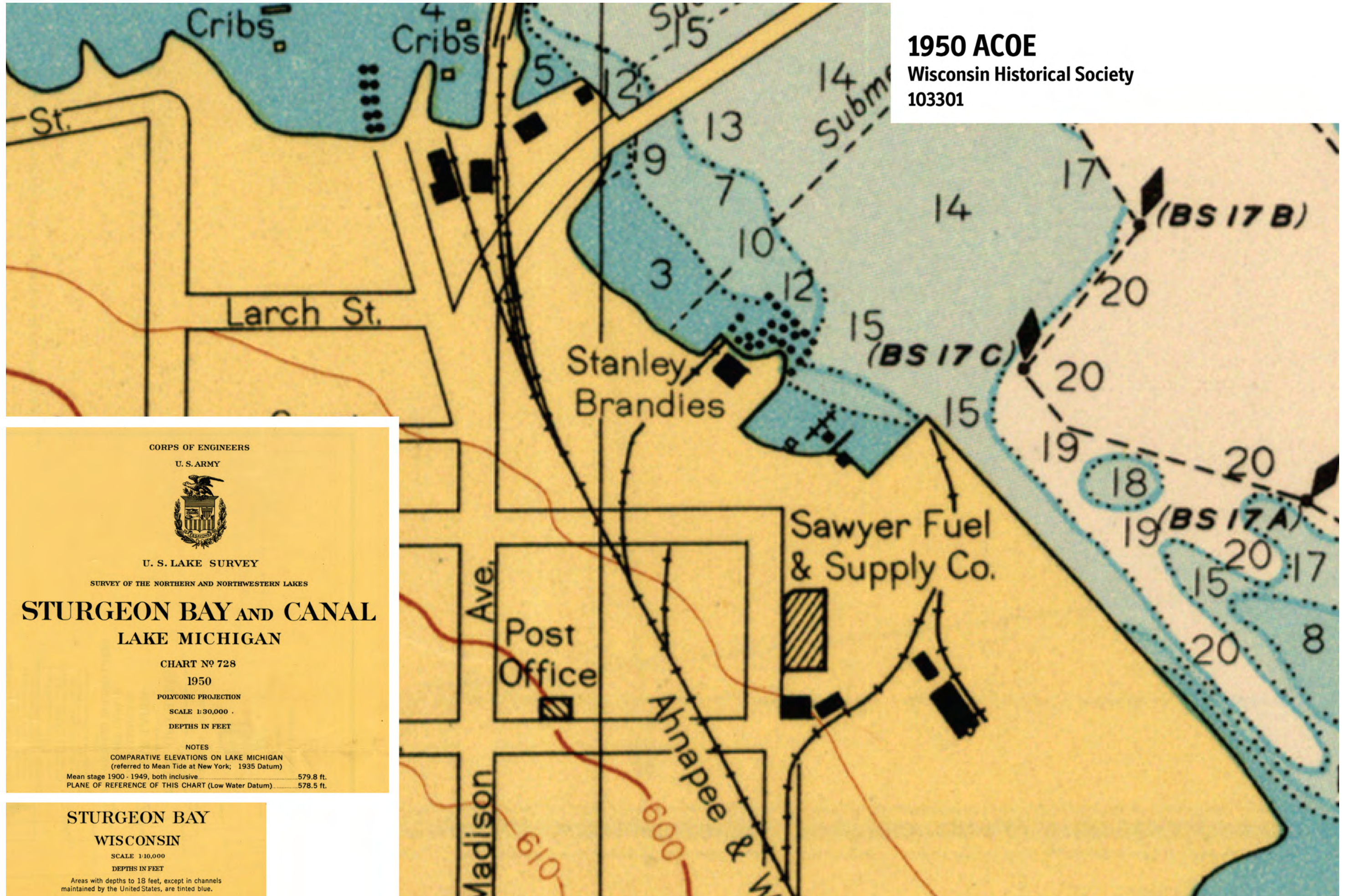
STURGEON BAY AND SAWYER
WISCONSIN
SCALE 1:10,000
DEPTHS IN FEET
Areas with depths to 18 feet, except in channels
maintained by the United States, are tinted blue.

1928-1944 Sanborn
UW-Milwaukee
AGS Library



1950 ACOE

Wisconsin Historical Society
103301



CORPS OF ENGINEERS
U. S. ARMY



U. S. LAKE SURVEY

SURVEY OF THE NORTHERN AND NORTHWESTERN LAKES

**STURGEON BAY AND CANAL
LAKE MICHIGAN**

CHART No 728

1950

POLYCONIC PROJECTION

SCALE 1:30,000

DEPTHS IN FEET

NOTES

COMPARATIVE ELEVATIONS ON LAKE MICHIGAN
(referred to Mean Tide at New York; 1935 Datum)

Mean stage 1900 - 1949, both inclusive 579.8 ft.
PLANE OF REFERENCE OF THIS CHART (Low Water Datum) 578.5 ft.

STURGEON BAY

WISCONSIN

SCALE 1:10,000

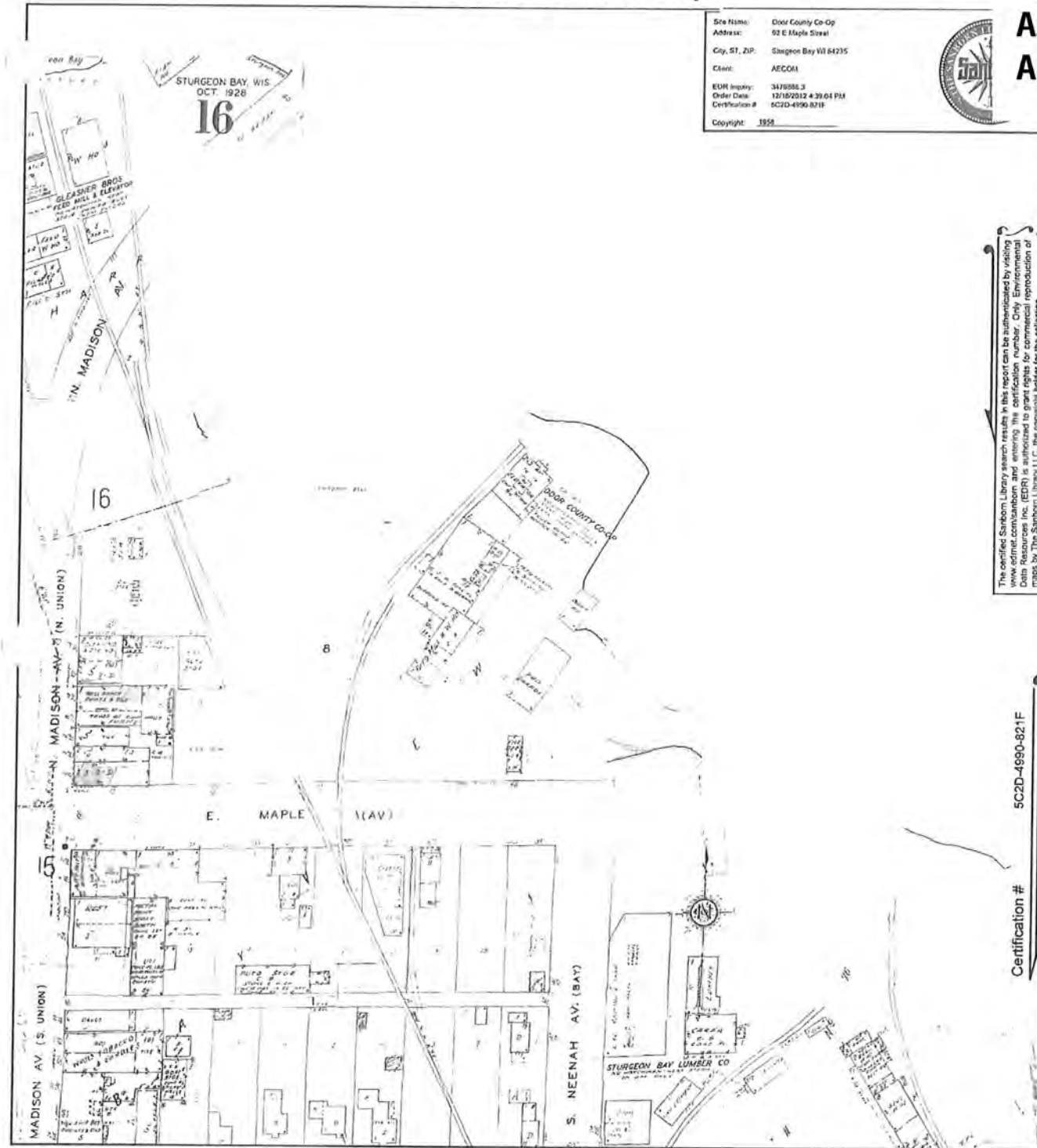
DEPTHS IN FEET

Areas with depths to 18 feet, except in channels
maintained by the United States, are tinted blue.

1958 Certified Sanborn Map

1958 Sanborn

As provided in Phase I Environmental, Appendix F, AECOM



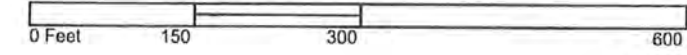
Site Name: Door County Co-Op
 Address: 92 E Maple Street
 City, ST, ZIP: Sturgeon Bay WI 54235
 Client: AECOM
 EDR Imply: 3479886.3
 Order Date: 12/15/2012 4:29:04 PM
 Certification #: 5C2D-4990-821F
 Copyright: 1958



The certified Sanborn Library search results in this report can be authenticated by visiting www.edr.com/sanborn and entering the certification number. Only Environmental Data Resources Inc. (EDR) is authorized to grant rights for commercial reproduction of maps by The Sanborn Library LLC. The copyright holder for the collection.

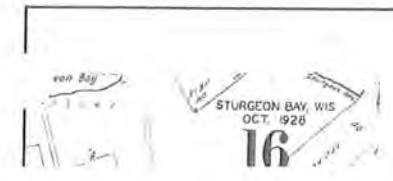
Certification # 5C2D-4990-821F

This Certified Sanborn Map combines the following sheets. Outlined areas indicate map sheets within the collection.



Volume 1, Sheet 16

1958 Certified Sanborn Map



Site Name: Door County Co-Op
 Address: 92 E Maple Street
 City, ST, ZIP: Sturgeon Bay WI 54235
 Client: AECOM
 EDR Imply: 3479886.3
 Order Date: 12/15/2012 4:29:04 PM
 Certification #: 5C2D-4990-821F
 Copyright: 1958

