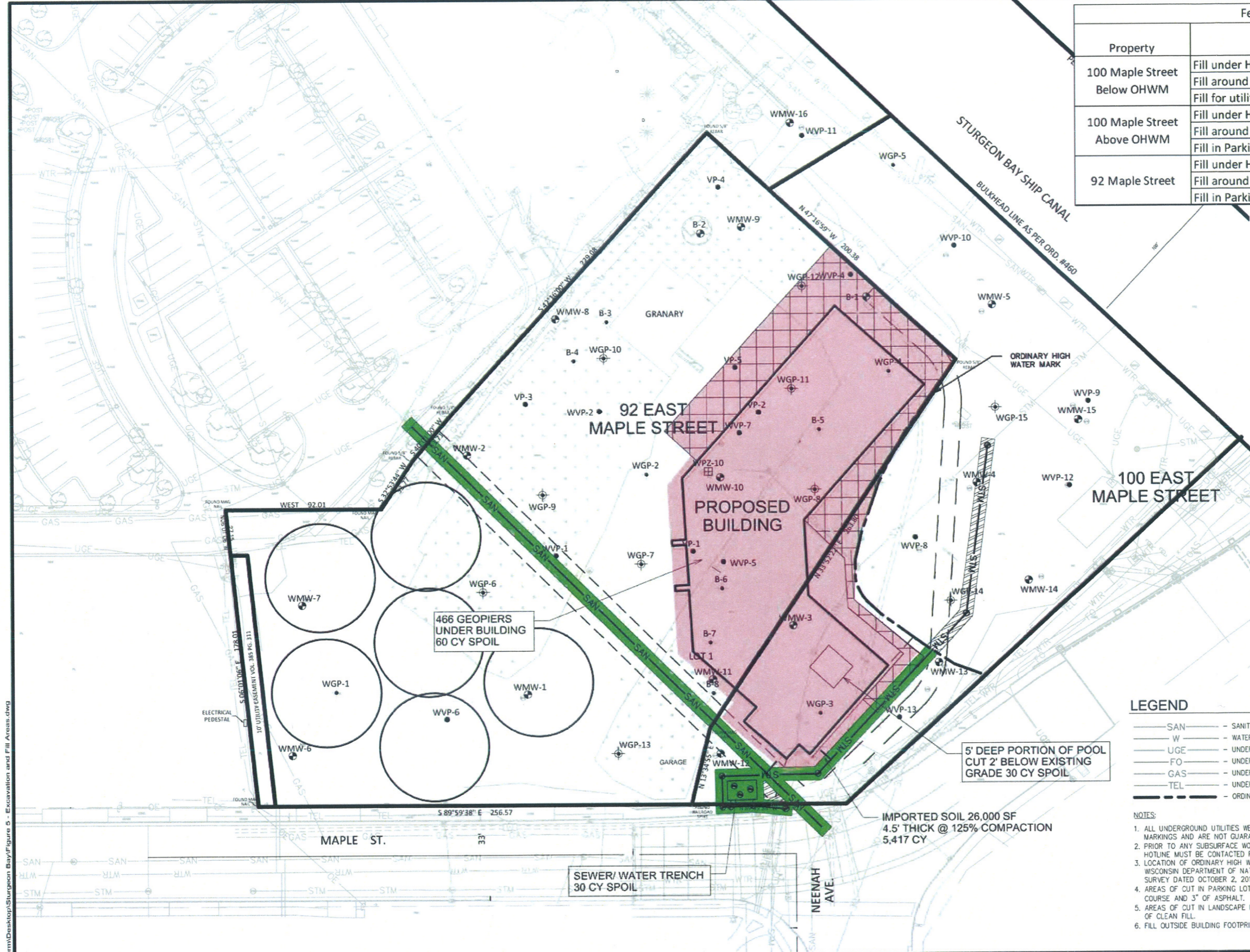


Festival Waterfront Fill Calculations

Property	Area	Area of Fill (SF)	Average Depth of Fill (FT)	Volume of Fill (CY)
100 Maple Street Below OHWM	Fill under Hotel	-	-	-
	Fill around Hotel	953	1.5	52.94
	Fill for utility work	780	5.0	144.44
100 Maple Street Above OHWM	Fill under Hotel	4,829	3.5	625.98
	Fill around Hotel	5,867	2.5	543.24
	Fill in Parking Areas / Islands	2,141	1.5	118.94
92 Maple Street	Fill under Hotel	14,575	4.0	2,159.26
	Fill around Hotel	8,577	2.5	794.17
	Fill in Parking Areas / Islands	55,956	0.8	1,554.33



GROUND SURFACE COVER

- GRASS
- SAND & GRAVEL
- ASPHALT/CONCRETE
- IMPORTED SOIL
- EXCAVATION MATERIAL FROM UTILITY IMPROVEMENTS TO BE REUSED AS TRENCH BACKFILL
- AREA OF RELOCATED HISTORIC FILL
- EXCAVATION MATERIAL FROM UTILITY IMPROVEMENTS TO BE DISPOSED IN SUBTITLE D LANDFILL
- TEMPORARY SOIL STOCK PILES (IMPORTED SOIL)

LEGEND

- SAN - SANITARY SEWER LINE
 - W - WATER MAIN
 - UGE - UNDERGROUND ELECTRIC LINE
 - FO - UNDERGROUND FIBER OPTIC LINE
 - GAS - UNDERGROUND GAS LINE
 - TEL - UNDERGROUND TELEPHONE LINE
 - ORDINARY HIGH WATER MARK
 - WMW-5 - MONITORING WELL
 - WGP-4 - GEOPROBE
 - WVP-9 - VAPOR PROBE
 - WPZ-10 - PIEZOMETER
 - B-5 - MONITORING WELL (BY STS CONSULTANTS 2004)
 - B-4 - GEOPROBE (BY STS CONSULTANTS 2004)
 - VP-1 - VAPOR PROBE (BY STS CONSULTANTS 2004)
- NOTES:**
- ALL UNDERGROUND UTILITIES WERE LOCATED AS PER DIGGER'S HOTLINE MARKINGS AND ARE NOT GUARANTEED TO BE COMPLETE OR CORRECT. PRIOR TO ANY SUBSURFACE WORK ON THIS PROPERTY, DIGGER'S HOTLINE MUST BE CONTACTED FOR A RE-LOCATE.
 - LOCATION OF ORDINARY HIGH WATER MARK OF STURGEON BAY PER WISCONSIN DEPARTMENT OF NATURAL RESOURCES. BASED ON PLAT OF SURVEY DATED OCTOBER 2, 2014.
 - AREAS OF CUT IN PARKING LOT TO BE COVERED WITH 8" OF BASE COURSE AND 3" OF ASPHALT.
 - AREAS OF CUT IN LANDSCAPE ISLANDS TO BE UNDERCUT TO ALLOW 18" OF CLEAN FILL.
 - FILL OUTSIDE BUILDING FOOTPRINT TO INCLUDE 18" CLEAN SOIL COVER.

C:\Users\degnem\Desktop\Sturgeon Bay\Figure 5 - Excavation and Fill Areas.dwg

DES BY	BOOK NO	1	02-11-2015	ADDED ORDINARY HIGH WATER MARK FOR STURGEON BAY	4	09-27-2015	COMBINED EXHIBITS, ADDED SANITARY & STORM SEWER
J. STEINER		2	06-11-2015	ADDED WGP-13 - 15, WMW-12 - 16, MVP-11 - 13			
M. DEGNER	19-0422.00	3	06-26-2015	ADDED GROUND SURFACE COVER INFORMATION			
J. STEINER	SEPTEMBER 2015	NO	DATE	REVISION	NO	DATE	REVISION

WEST WATERFRONT REDEVELOPMENT PROJECT
CITY OF STURGEON BAY
STURGEON BAY, WISCONSIN



EXCAVATION AND FILL AREAS

DRAWING NO
4