

Plat of Survey

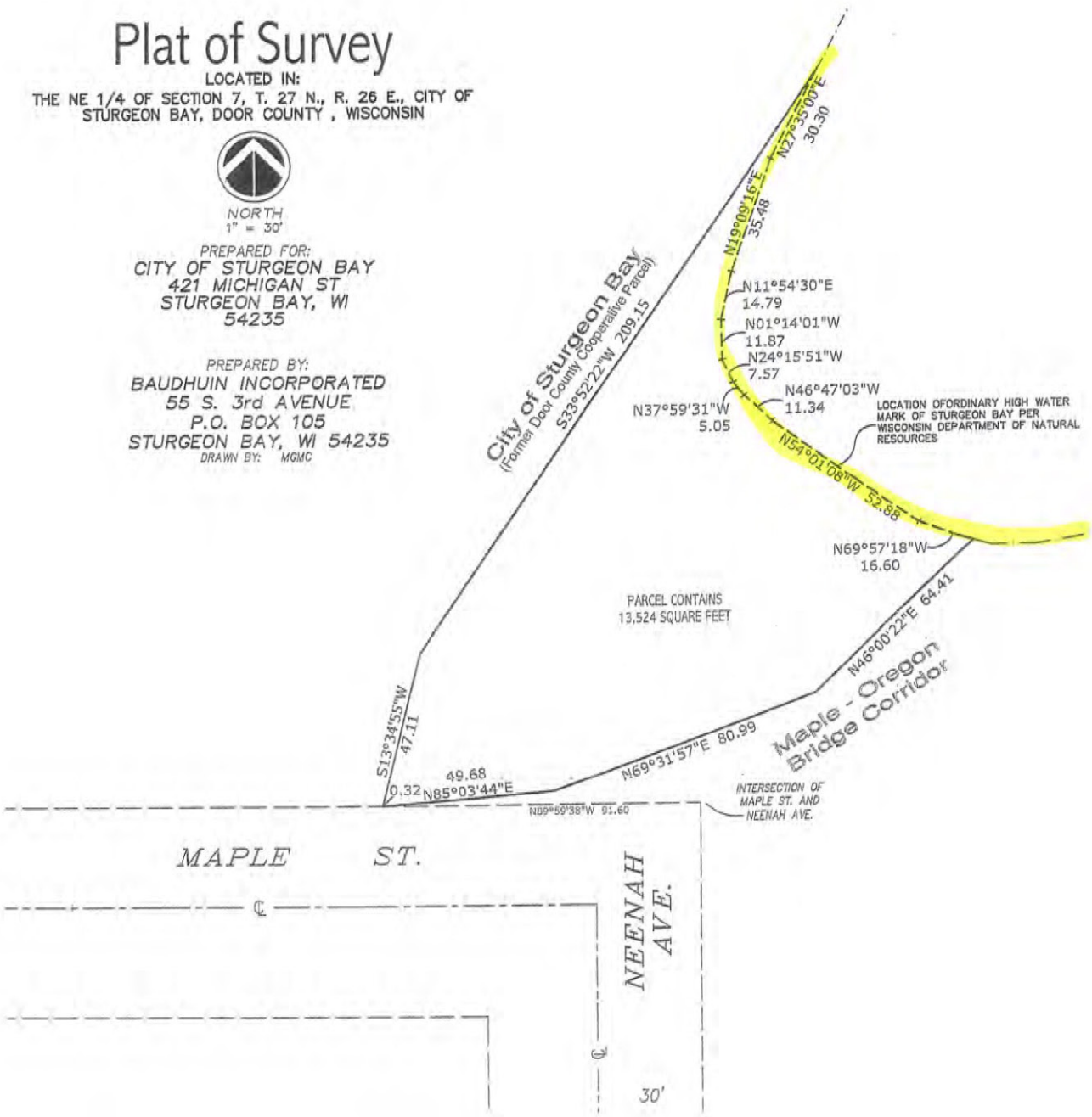
LOCATED IN:
THE NE 1/4 OF SECTION 7, T. 27 N., R. 26 E., CITY OF
STURGEON BAY, DOOR COUNTY, WISCONSIN



NORTH
1" = 30'

PREPARED FOR:
CITY OF STURGEON BAY
421 MICHIGAN ST
STURGEON BAY, WI
54235

PREPARED BY:
BAUDHUIN INCORPORATED
55 S. 3rd AVENUE
P.O. BOX 105
STURGEON BAY, WI 54235
DRAWN BY: MGMC



- 1 it.
- 2 A It would be the location that says "location of
- 3 ordinary high water mark."
- 4 Q Then I'll just ask you to highlight that line with
- 5 a highlighter.
- 6 (Witness indicating)
- 7 Q Is that your understanding of the full extent of
- 8 the ordinary high water mark?
- 9 A It would be the line.
- 10 Q As highlighted by you?
- 11 (Witness indicating)



From Bruhn deposition 2016