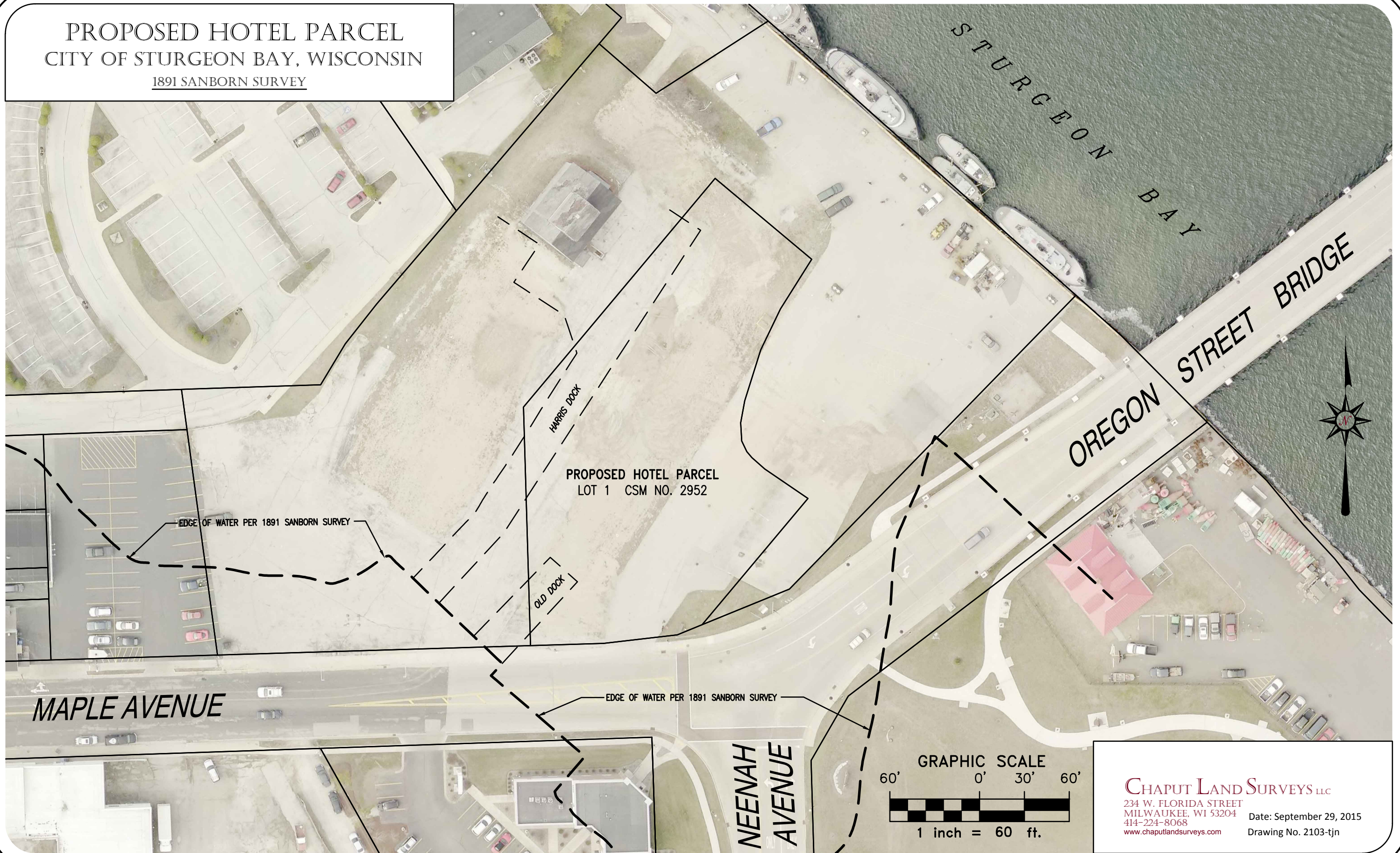


PROPOSED HOTEL PARCEL  
CITY OF STURGEON BAY, WISCONSIN  
1891 SANBORN SURVEY



CHAPUT LAND SURVEYS LLC  
234 W. FLORIDA STREET  
MILWAUKEE, WI 53204  
414-224-8068  
www.chaputlandsurveys.com

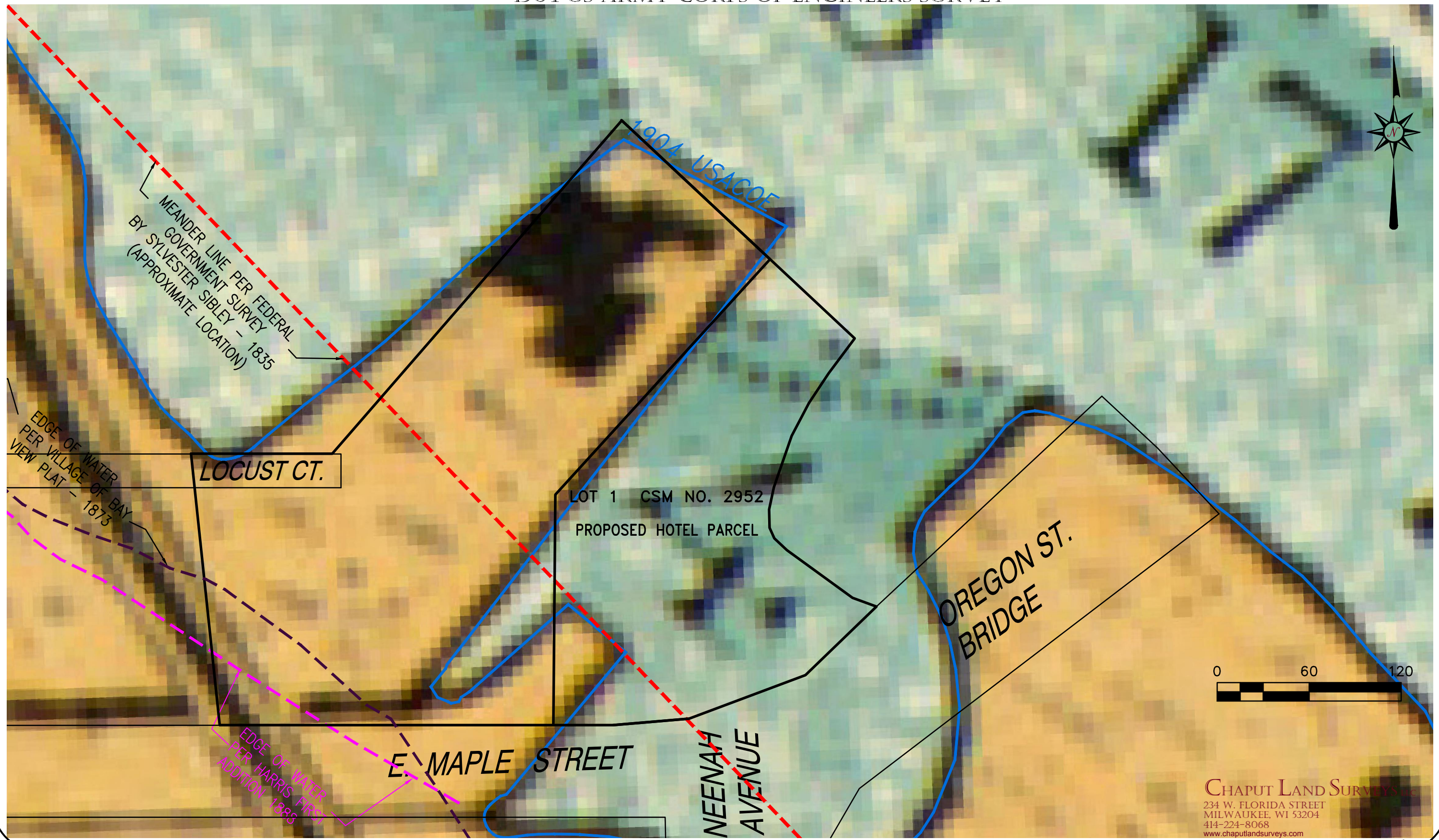
Date: September 29, 2015  
Drawing No. 2103-tjn



(this page intentionally blank)



PROPOSED HOTEL PARCEL CITY OF STURGEON BAY, WISCONSIN  
1904 US ARMY CORPS OF ENGINEERS SURVEY



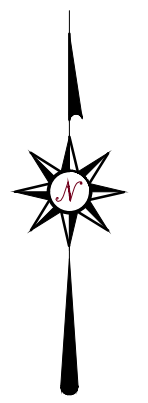
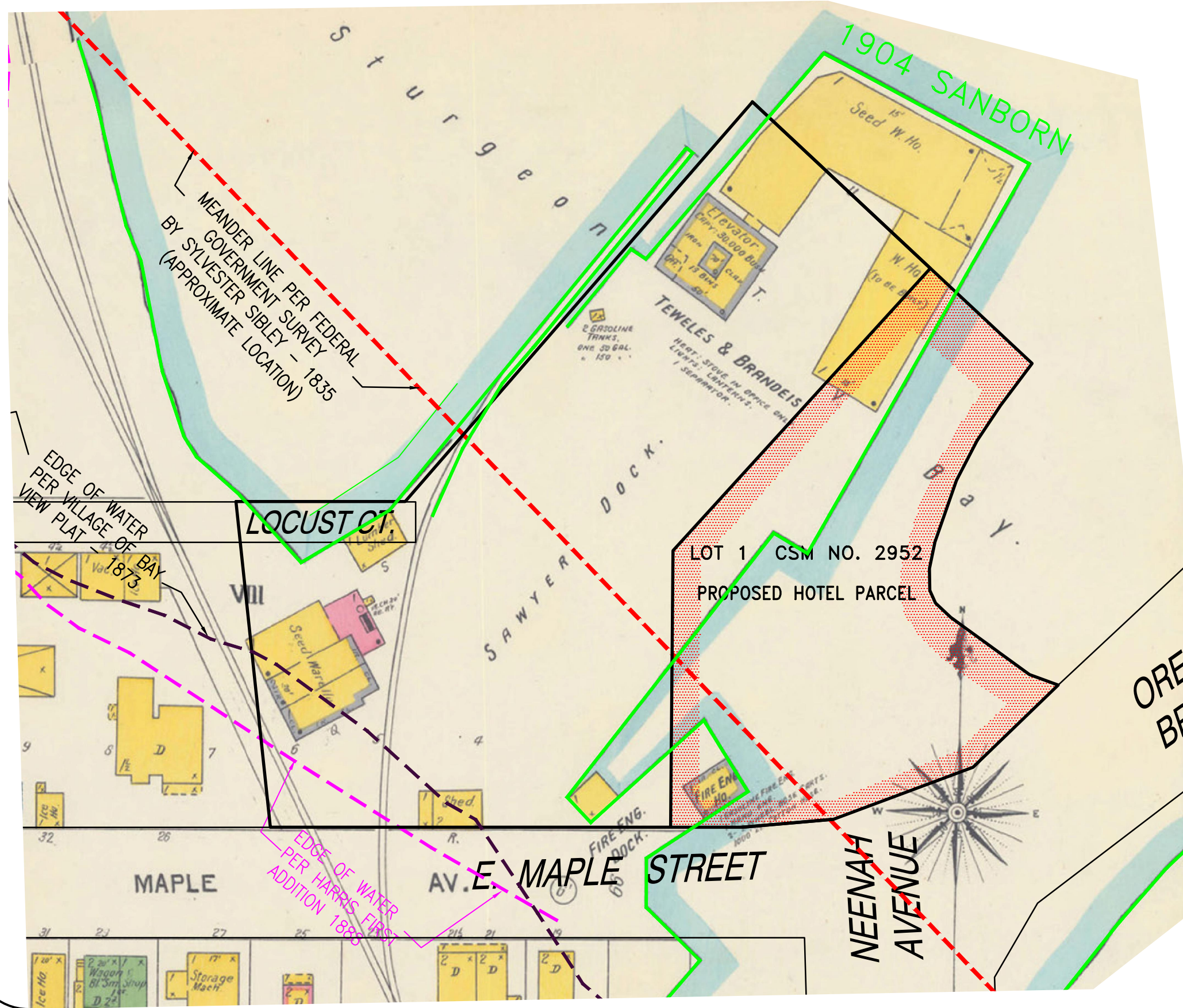
CHAPUT LAND SURVEYS, INC.  
234 W. FLORIDA STREET  
MILWAUKEE, WI 53204  
414-224-8068  
www.chaputlandsurveys.com  
Date: Oct 4, 2016 Drawing No. 2103-far

Exhibit 10



(this page intentionally blank)

PROPOSED HOTEL PARCEL CITY OF STURGEON BAY, WISCONSIN  
1904 SANBORN MAP



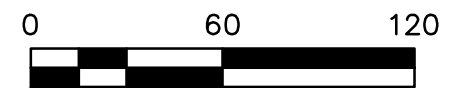
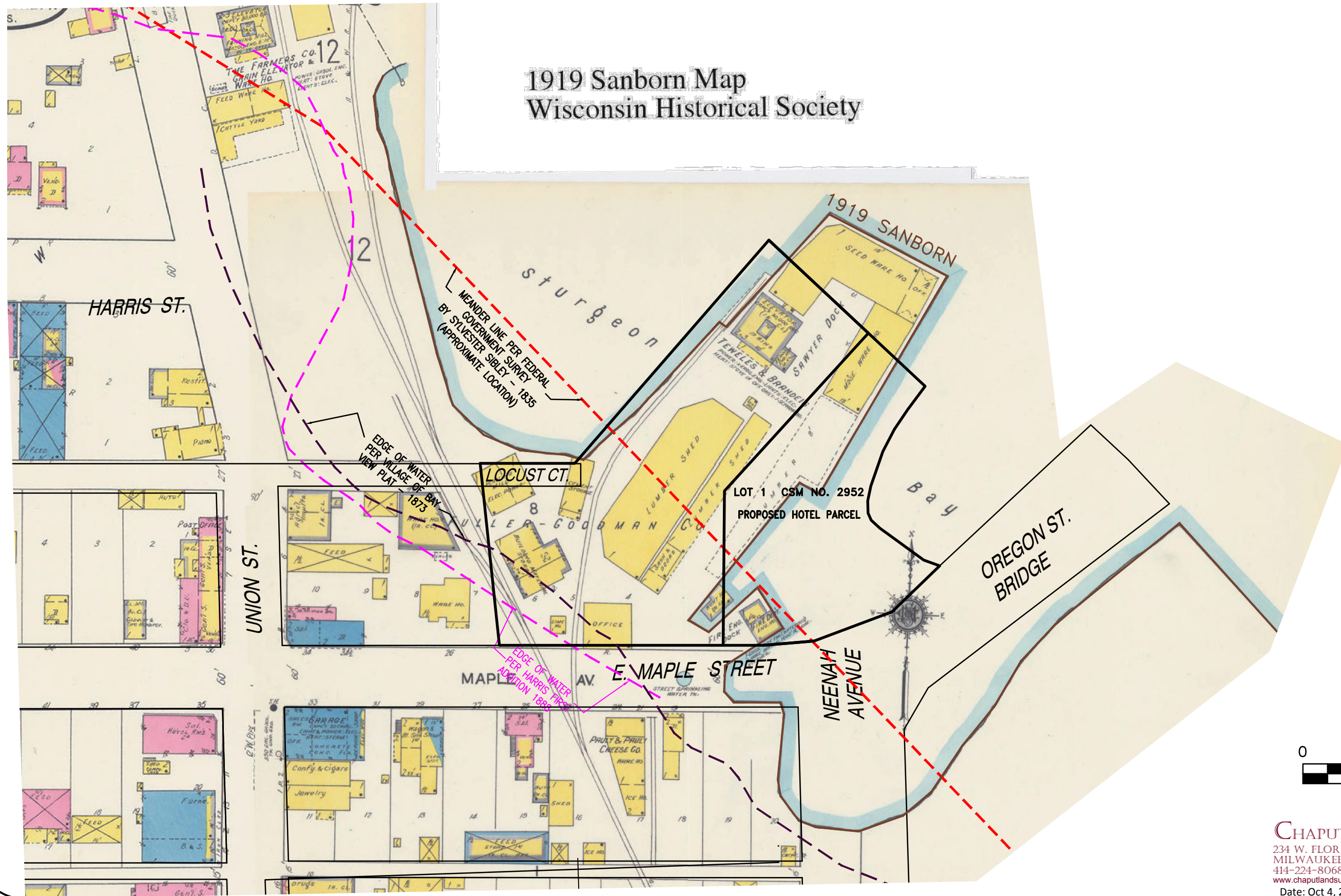
CHAPUT LAND SURVEYS LLC  
234 W. FLORIDA STREET  
MILWAUKEE, WI 53204  
414-224-8068  
www.chaputlandsurveys.com  
Date: Oct 4, 2016 Drawing No. 2103-far

(this page intentionally blank)



PROPOSED HOTEL PARCEL CITY OF STURGEON BAY, WISCONSIN  
1919 SANBORN MAP

1919 Sanborn Map  
Wisconsin Historical Society

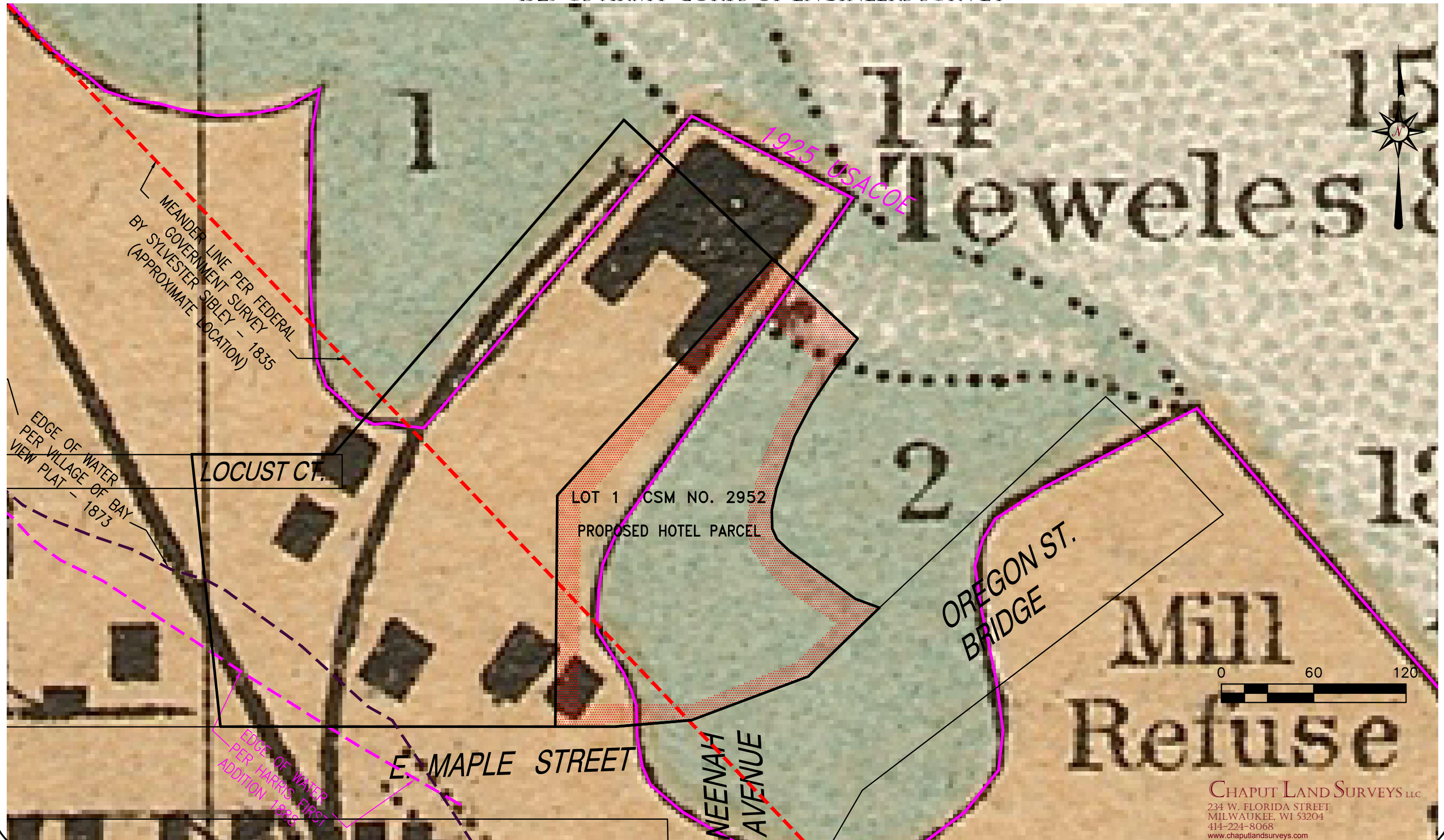


CHAPUT LAND SURVEYS LLC  
234 W. FLORIDA STREET  
MILWAUKEE, WI 53204  
414-224-8068  
www.chaputlandsurveys.com  
Date: Oct 4, 2016 Drawing No. 2103-far

(this page intentionally blank)



PROPOSED HOTEL PARCEL CITY OF STURGEON BAY, WISCONSIN  
1925 US ARMY CORPS OF ENGINEERS SURVEY



CHAPUT LAND SURVEYS LLC  
234 W. FLORIDA STREET  
MILWAUKEE, WI 53204  
414-224-8068  
www.chaputlandsurveys.com  
Date: Oct 4, 2016 Drawing No. 2103-far

Exhibit 13

(this page intentionally blank)



PROPOSED HOTEL PARCEL  
CITY OF STURGEON BAY, WISCONSIN  
1963 AERIAL PHOTO



CHAPUT LAND SURVEYS LLC  
234 W. FLORIDA STREET  
MILWAUKEE, WI 53204  
414-224-8068  
www.chaputlandsurveys.com

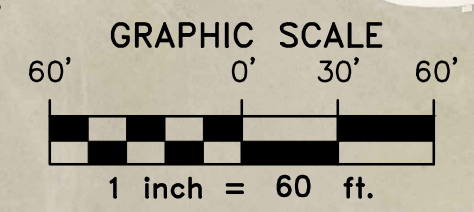
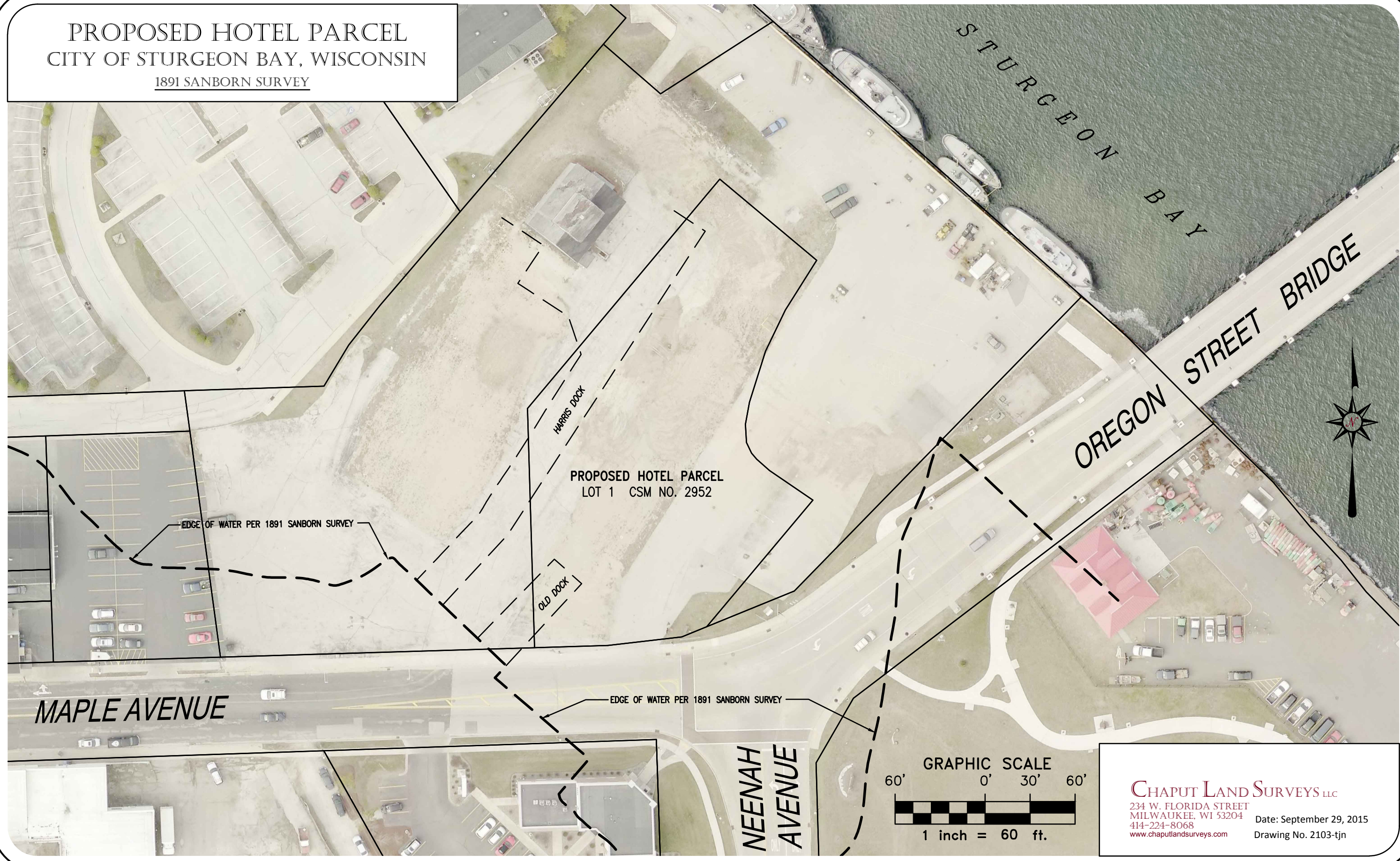
Date: April 14, 2016  
Drawing No. 2103-dje



(this page intentionally blank)



PROPOSED HOTEL PARCEL  
CITY OF STURGEON BAY, WISCONSIN  
1891 SANBORN SURVEY



CHAPUT LAND SURVEYS LLC  
234 W. FLORIDA STREET  
MILWAUKEE, WI 53204  
414-224-8068  
www.chaputlandsurveys.com  
Date: September 29, 2015  
Drawing No. 2103-tjn



(this page intentionally blank)



PROPOSED HOTEL PARCEL  
CITY OF STURGEON BAY, WISCONSIN

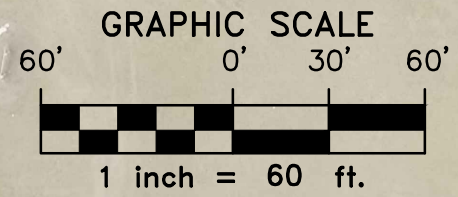
PROPOSED HOTEL PARCEL  
LOT 1 CSM NO. 2952

MAPLE AVENUE

NEENAH  
AVENUE

STURGEON  
BAY

OREGON STREET BRIDGE



CHAPUT LAND SURVEYS LLC  
234 W. FLORIDA STREET  
MILWAUKEE, WI 53204  
414-224-8068  
www.chaputlandsurveys.com

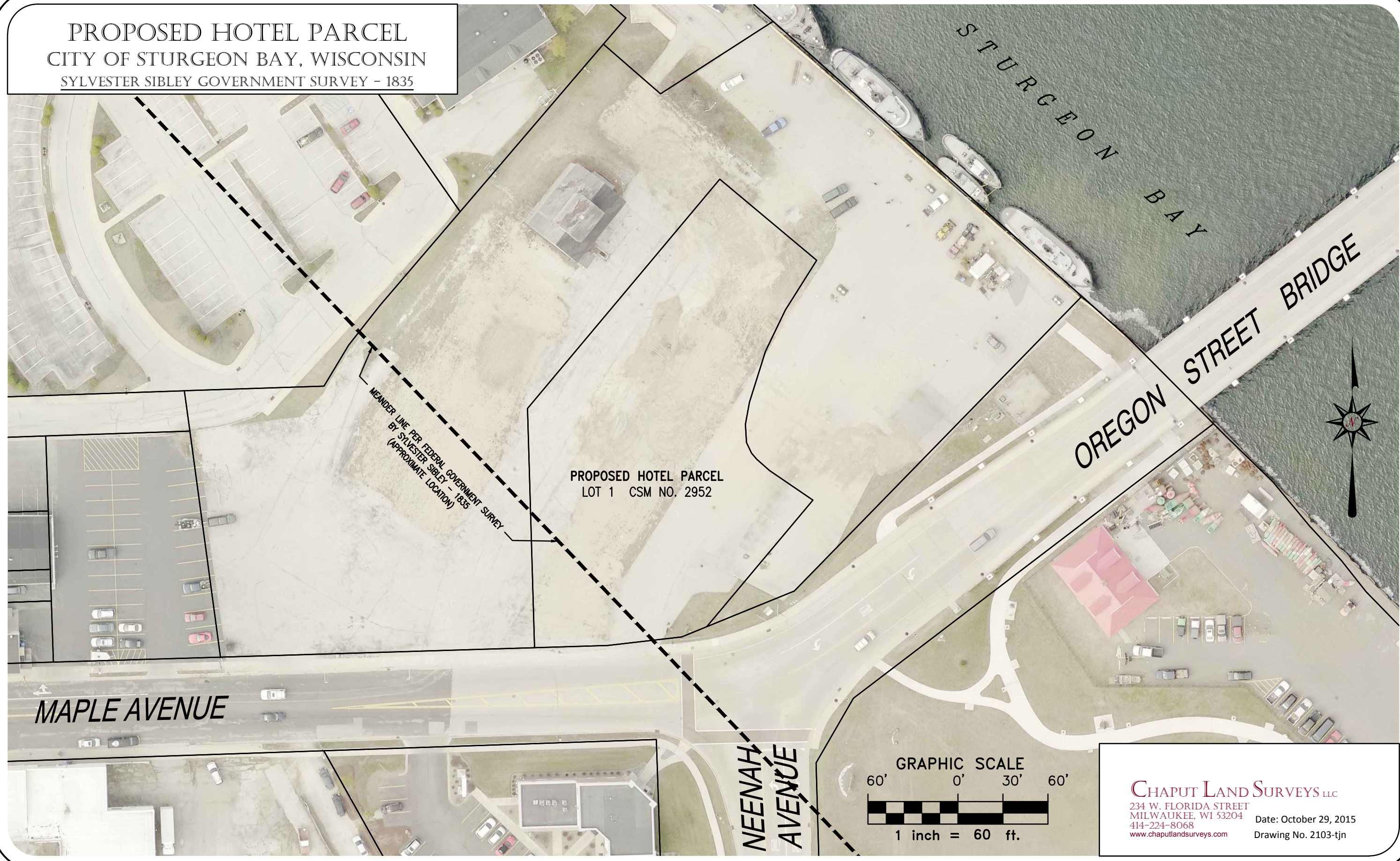
Date: September 29, 2015  
Drawing No. 2103-tjn



(this page intentionally blank)



PROPOSED HOTEL PARCEL  
CITY OF STURGEON BAY, WISCONSIN  
SYLVESTER SIBLEY GOVERNMENT SURVEY - 1835



PROPOSED HOTEL PARCEL  
LOT 1 CSM NO. 2952

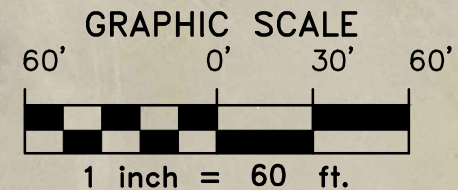
MEANDER LINE PER FEDERAL GOVERNMENT SURVEY  
BY SYLVESTER SIBLEY - 1835  
(APPROXIMATE LOCATION)

MAPLE AVENUE

NEENAH AVENUE

OREGON STREET BRIDGE

STURGEON BAY



CHAPUT LAND SURVEYS LLC  
234 W. FLORIDA STREET  
MILWAUKEE, WI 53204  
414-224-8068  
www.chaputlandsurveys.com  
Date: October 29, 2015  
Drawing No. 2103-tjn