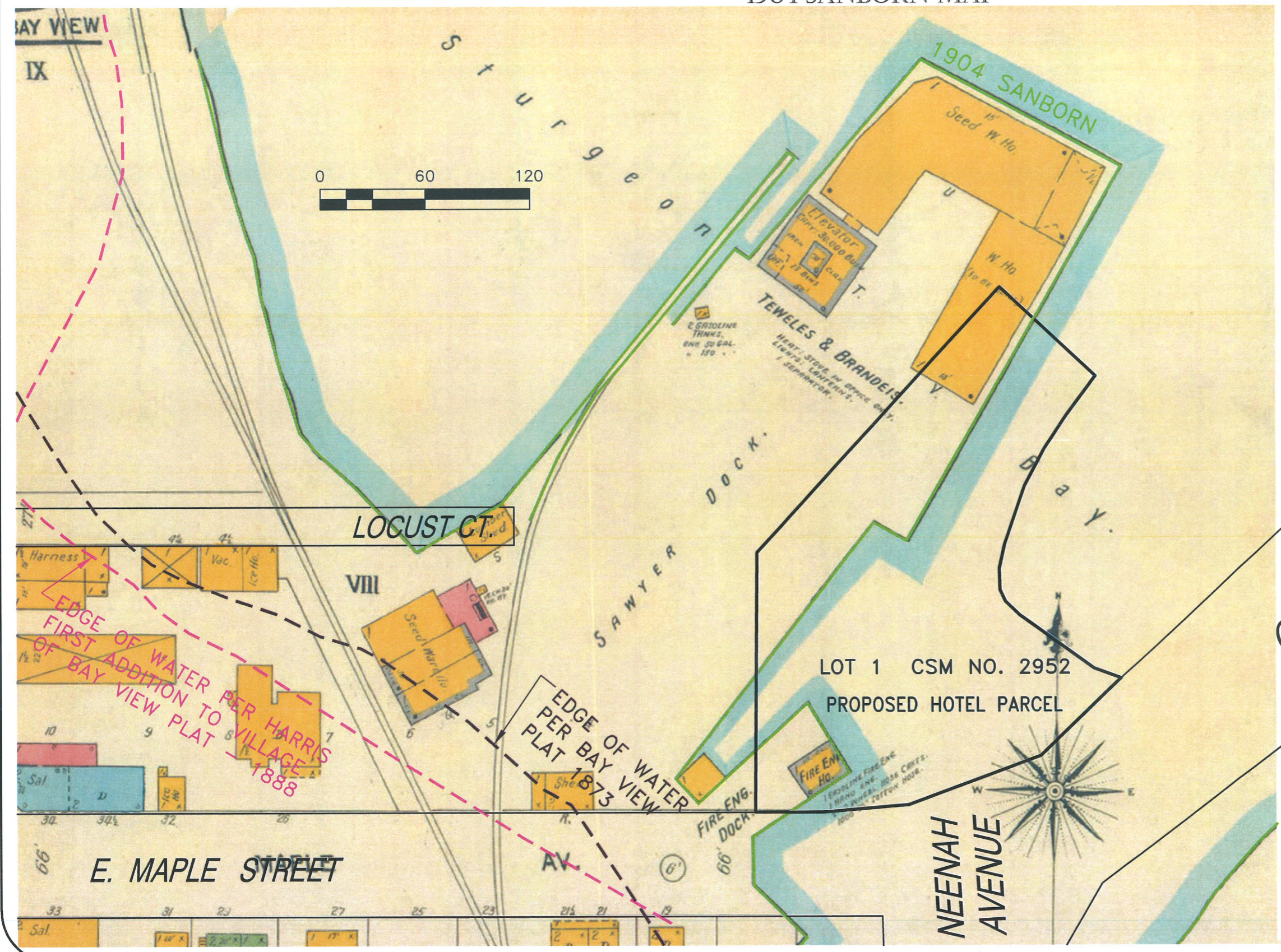


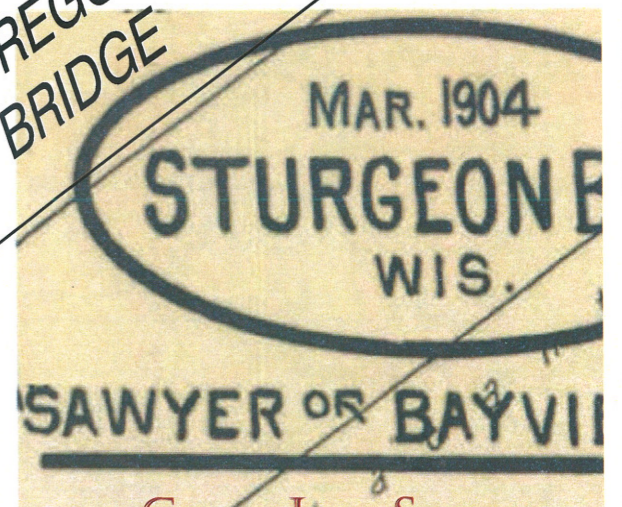
PROPOSED HOTEL PARCEL CITY OF STURGEON BAY, WISCONSIN  
1904 SANBORN MAP



**KEY**

NUMBER OF STORIES 3	FIRE WALL 6IN. ABV F
SHINGLE ROOF X	METAL CORNICE
COMPOSITION R'F	FIRE WALL 12 IN. ABV
SLATE VERTIN R'F O	WOOD CORNICE
	FIRE WALL 18 IN. ABV
	FRAME PARTITION
	OPENING WITH IRON
STEAM BOILER	" " "STAIR
	IRON DOOR
	WINDOWS & IRON SH
COURTNG FROM LEFT TO RIGHT	WINDOW - 1ST STORY
LOOKING TOWARD BUILDING	WINDOWS 1ST & 3RD
DOOR REPRESENTS OPENING	" " 2ND & 4TH
	STABLE
	BUILDINGS COLORED YELLOW AR
	" " RED
	" " BLUE
	" " GRAY
	" " BROWN
	" " GREEN
(5) (2) INDICATE RELATIVE HEIGHT	
+ FIRE STATION, AS SHOWN ON P	
ALTERNATE STREET NUMBERS AR	
CONSECUTIVE STREET NO'S ARE AR	

OREGON ST. BRIDGE



LOT 1 CSM NO. 2952  
PROPOSED HOTEL PARCEL

EDGE OF WATER PER HARRIS  
FIRST ADDITION TO VILLAGE  
OF BAY VIEW PLAT 1888

EDGE OF WATER  
PER BAY VIEW  
PLAT 1873

E. MAPLE STREET

NEENAH AVENUE

CHAPUT LAND SURVEYS LLC  
234 W. FLORIDA STREET  
MILWAUKEE, WI 53204  
414-224-8068  
www.chaputlandsurveys.com