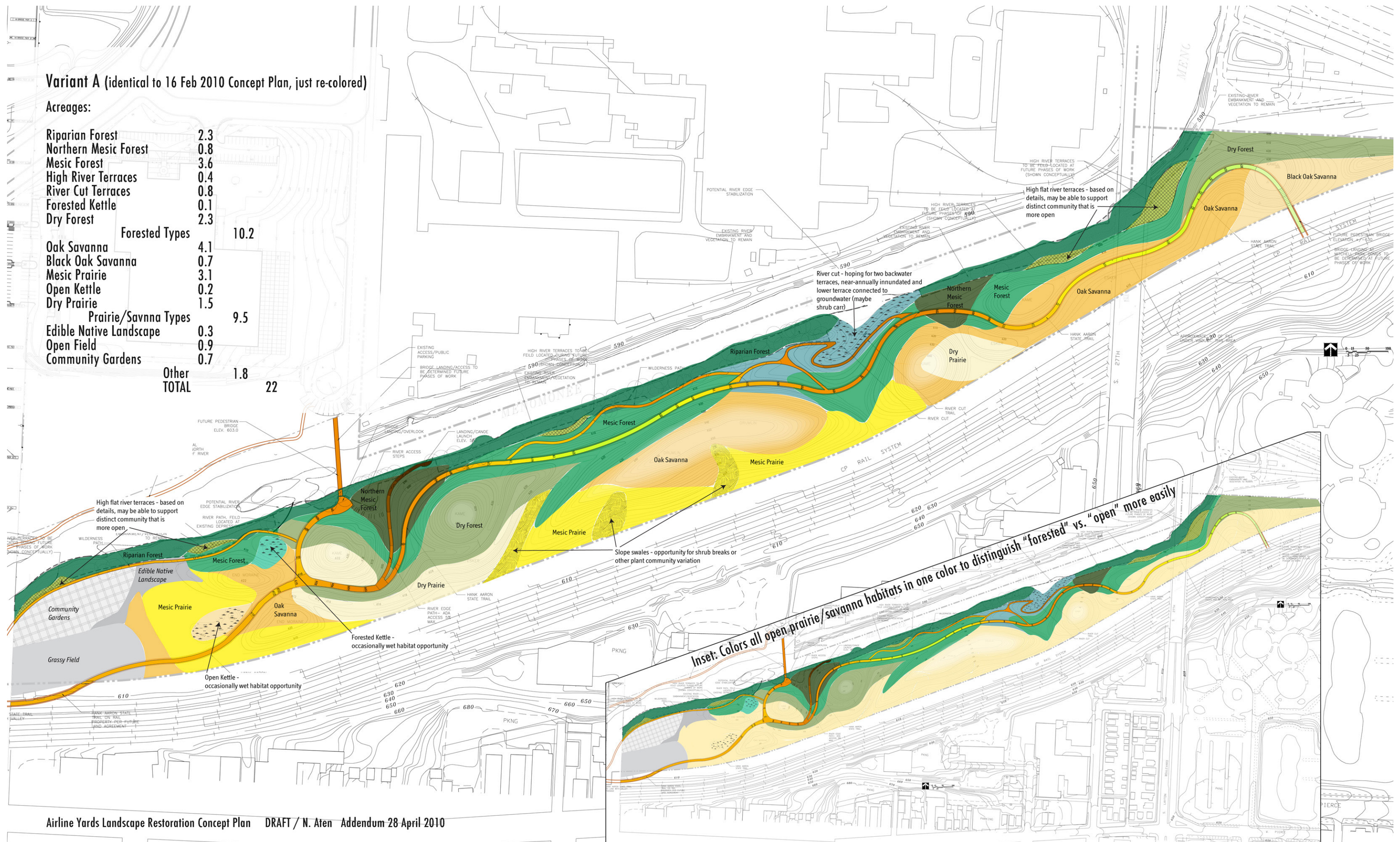


**Variant A (identical to 16 Feb 2010 Concept Plan, just re-colored)**

**Acreeages:**

Riparian Forest	2.3	
Northern Mesic Forest	0.8	
Mesic Forest	3.6	
High River Terraces	0.4	
River Cut Terraces	0.8	
Forested Kettle	0.1	
Dry Forest	2.3	
<b>Forested Types</b>	<b>10.2</b>	
Oak Savanna	4.1	
Black Oak Savanna	0.7	
Mesic Prairie	3.1	
Open Kettle	0.2	
Dry Prairie	1.5	
<b>Prairie/Savanna Types</b>	<b>9.5</b>	
Edible Native Landscape	0.3	
Open Field	0.9	
Community Gardens	0.7	
<b>Other</b>	<b>1.8</b>	
<b>TOTAL</b>	<b>22</b>	



High flat river terraces - based on details, may be able to support distinct community that is more open

River cut - hoping for two backwater terraces, near-annually inundated and lower terrace connected to groundwater (maybe shrub carr)

High flat river terraces - based on details, may be able to support distinct community that is more open

Slope swales - opportunity for shrub breaks or other plant community variation

*Inset: Colors all open prairie/savanna habitats in one color to distinguish "forested" vs. "open" more easily*

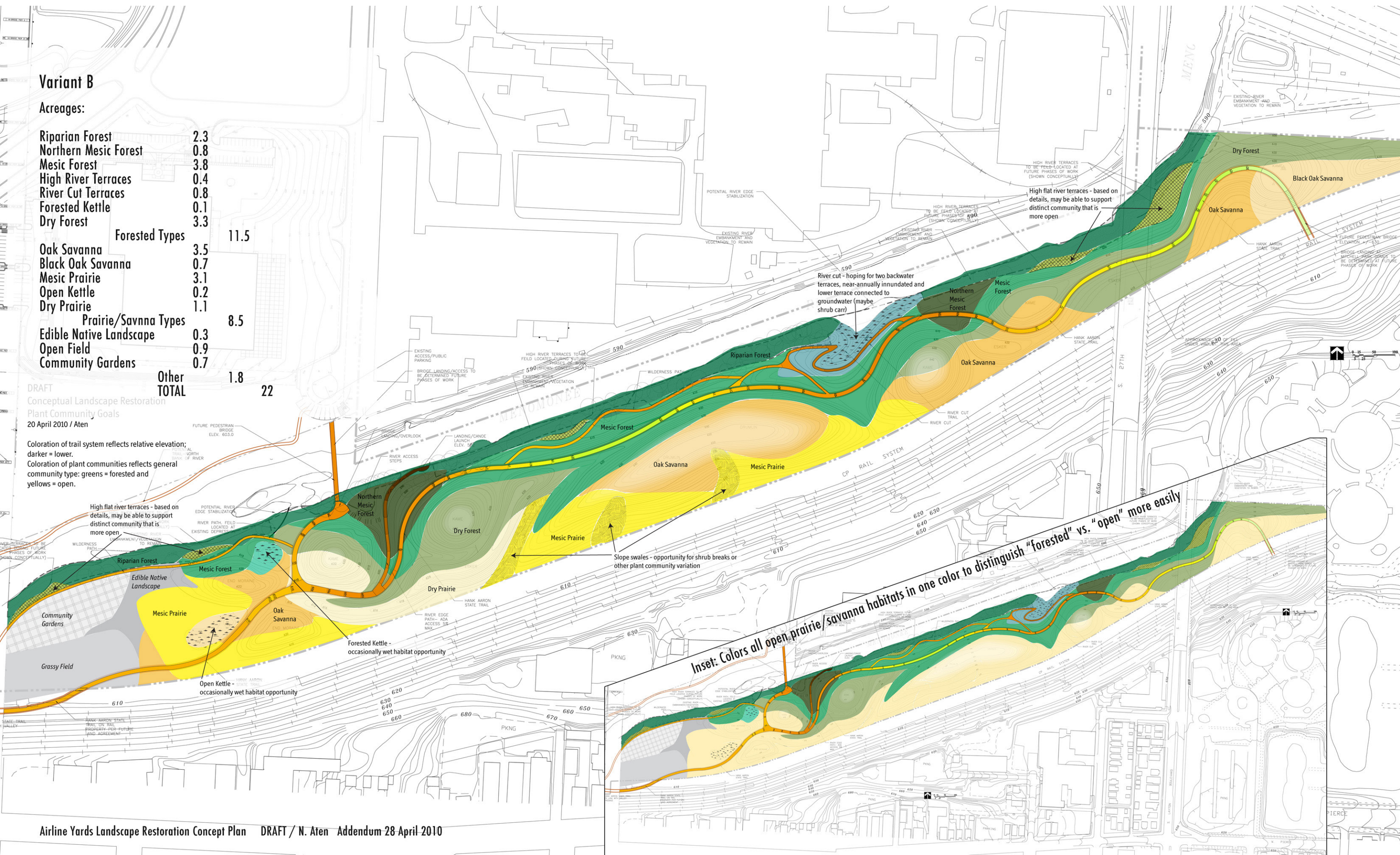
**Variant B**

**Acreages:**

Riparian Forest	2.3	
Northern Mesic Forest	0.8	
Mesic Forest	3.8	
High River Terraces	0.4	
River Cut Terraces	0.8	
Forested Kettle	0.1	
Dry Forest	3.3	
<b>Forested Types</b>	<b>11.5</b>	
Oak Savanna	3.5	
Black Oak Savanna	0.7	
Mesic Prairie	3.1	
Open Kettle	0.2	
Dry Prairie	1.1	
<b>Prairie/Savanna Types</b>	<b>8.5</b>	
Edible Native Landscape	0.3	
Open Field	0.9	
Community Gardens	0.7	
<b>Other</b>	<b>1.8</b>	
<b>TOTAL</b>	<b>22</b>	

DRAFT  
 Conceptual Landscape Restoration  
 Plant Community Goals  
 20 April 2010 / Aten

Coloration of trail system reflects relative elevation;  
 darker = lower.  
 Coloration of plant communities reflects general  
 community type: greens = forested and  
 yellows = open.



*Inset: Colors all open prairie/savanna habitats in one color to distinguish "forested" vs. "open" more easily*

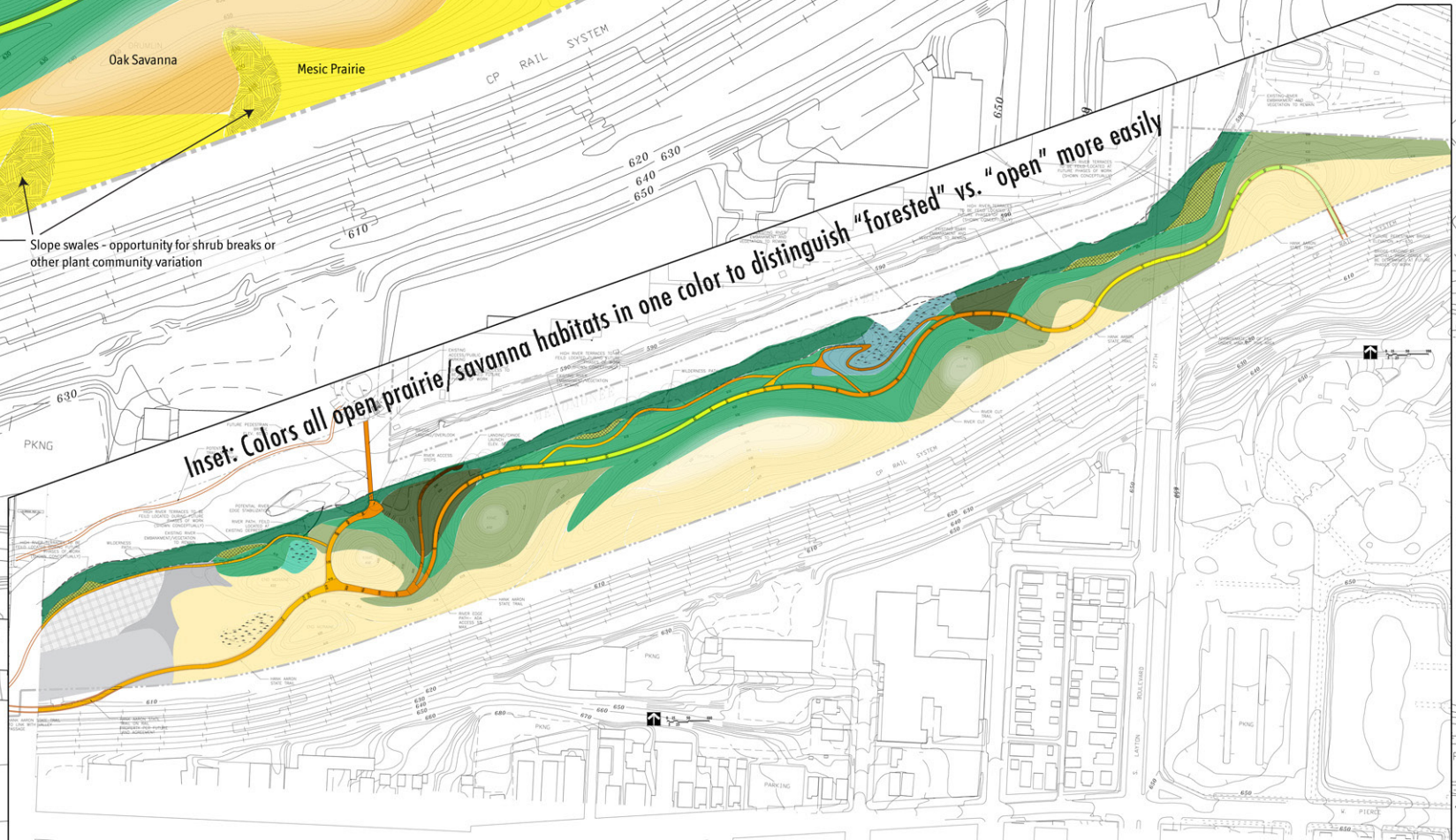
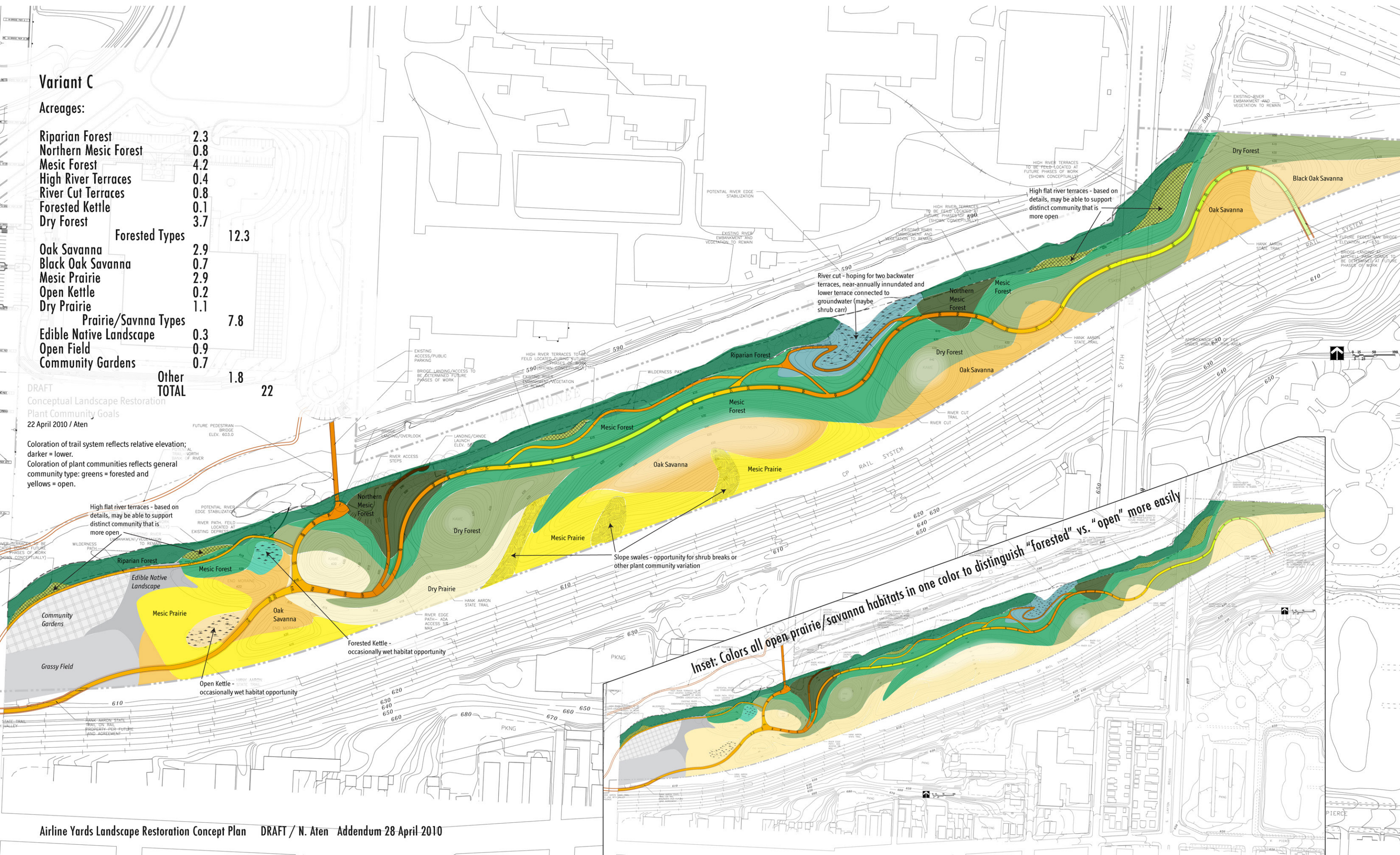
**Variant C**

**Acres:**

Riparian Forest	2.3	
Northern Mesic Forest	0.8	
Mesic Forest	4.2	
High River Terraces	0.4	
River Cut Terraces	0.8	
Forested Kettle	0.1	
Dry Forest	3.7	
<b>Forested Types</b>	<b>12.3</b>	
Oak Savanna	2.9	
Black Oak Savanna	0.7	
Mesic Prairie	2.9	
Open Kettle	0.2	
Dry Prairie	1.1	
<b>Prairie/Savanna Types</b>	<b>7.8</b>	
Edible Native Landscape	0.3	
Open Field	0.9	
Community Gardens	0.7	
<b>Other</b>	<b>1.8</b>	
<b>TOTAL</b>	<b>22</b>	

DRAFT  
 Conceptual Landscape Restoration  
 Plant Community Goals  
 22 April 2010 / Aten

Coloration of trail system reflects relative elevation;  
 darker = lower.  
 Coloration of plant communities reflects general  
 community type: greens = forested and  
 yellows = open.



**Variant D**

**Acres:**

Riparian Forest	2.3
Northern Mesic Forest	0.8
Mesic Forest	4.9
High River Terraces	0.4
River Cut Terraces	0.8
Forested Kettle	0.1
Dry Forest	4.6
<b>Forested Types</b>	<b>13.9</b>
Oak Savanna	2.4
Black Oak Savanna	0.7
Mesic Prairie	2.0
Open Kettle	0.2
Dry Prairie	0.8
<b>Prairie/Savanna Types</b>	<b>6.0</b>
Edible Native Landscape	0.3
Open Field	0.9
Community Gardens	0.7
<b>Other</b>	<b>1.8</b>
<b>TOTAL</b>	<b>22</b>

DRAFT  
 Conceptual Landscape Restoration  
 Plant Community Goals  
 27 April 2010 / Aten

Coloration of trail system reflects relative elevation; darker = lower.  
 Coloration of plant communities reflects general community type: greens = forested and yellows = open.

